

**Contents:**

Symbols .....	2
Maintenance Item Part Numbers .....	3
Cylinder Block Assembly - .....	4
Cylinder Head Assembly / Front Cover - .....	6
Exhaust Manifold / Knock Sensors - .....	10
Intake Manifold Components - .....	14
Oil Pan and Oil Pump Assembly - .....	16
Remote Oil Filter Components - .....	18
Fuel Control Cell (FCC) Components - .....	20
Heat Exchanger and Components - .....	22
Raw Water Cooling Pump - .....	26
Wiring Harness Assemblies and Senders - .....	28
ECM and Relays - .....	30
Accessory Drive System Components - .....	32
Bellhousing and Starter Assembly Components - .....	34
Engine and Transmission Mounts - .....	36
Transmission and Related Parts - .....	40

**“TYPICAL VIEWS ARE SHOWN”****ENGINE ROTATION**

Engine Rotation is identified as “RH” or “LH” with the engine model number. Rotation always is determined from the flywheel end looking toward the front of the engine. In some instances, propeller shaft rotation may be opposite to that of the engine.

When ordering a replacement engine, production block or parts for the engine, be certain to check engine rotation. **DO NOT rely on propeller rotation in order to determine engine rotation.**

**LEFT-HAND ROTATION is STANDARD ROTATION.**

(Flywheel turns counterclockwise when viewed from flywheel end of the engine.)

**RIGHT-HAND ROTATION is OPPOSITE ROTATION.**

(Flywheel turns clockwise when viewed from flywheel end of the engine.)

**HOW TO READ THIS PARTS BOOK:**

ITEM	PART NO.	QTY.	DESCRIPTION	MODEL ID
1	RB001005I	1	Base Engine Assembly, 6.0L	

①

②

③

④

⑤

- ① ITEM NUMBER - This number corresponds with the number in the exploded view on the facing page.
- ② PART NUMBER - This is the designated part number for the particular component or assembly.
- ③ QUANTITY - This refers to the number of pieces used.
- ④ DESCRIPTION - This identifies what the component or assembly is.
- ⑤ MODEL ID - This identifies a component or assembly that is unique to a specific engine model.

=====

Symbols shown throughout parts list are defined here or on the bottom of the individual parts list page.

AR = As Required  
 OPT = Optional  
 NSS = Not Serviced Separately  
 NA = Not Available  
 OS = Oversize  
 US = Undersize  
 TBD = To Be Determined  
 NI = Not Illustrated

=====

**REPLACEMENT PARTS:****WARNING:**

Electrical, ignition and fuel system components on PCM Engines are designed and manufactured to comply with U.S. Coast Guard rules and regulations to minimize risks of fire or explosion.

Use of replacement electrical, ignition and fuel system components which do not comply with these rules and regulations could result in a fire or explosion hazard and should be avoided.

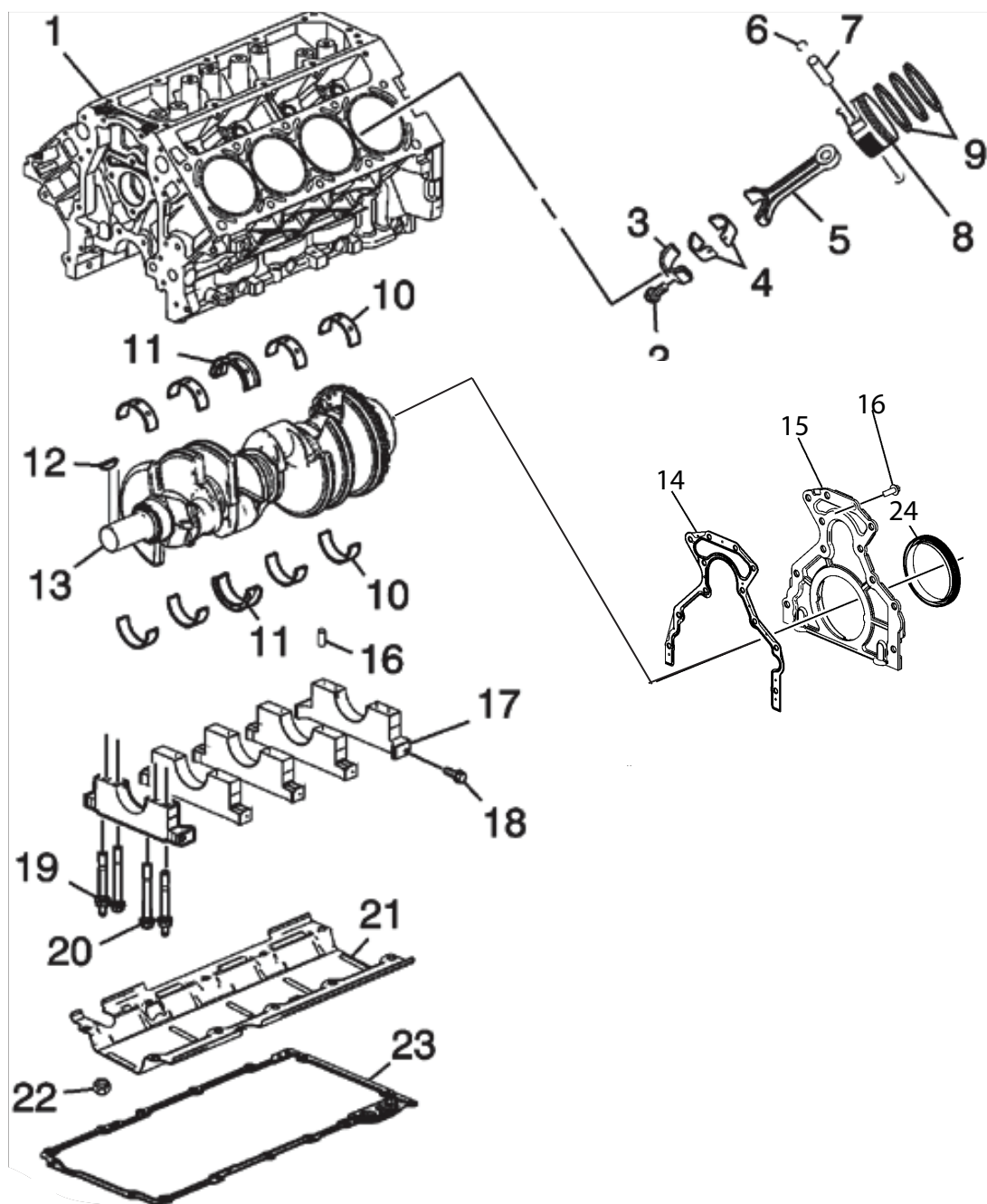
**MAINTENANCE ITEM PART NUMBERS:**

Description	Part Number
Oil Filter	R077001
Fuel Filter, Primary (Fuel Water Separator) Fuel Filter (FCC)	R077019
Spark Plugs	RP080026
Spark Plug Wire Set	RP030012
Serpentine Drive Belt (accessory-PCM)	RK120021
Supercharger Drive Belt	R066036
Raw Water Pump Impeller Kit	R066037
Thermostat, CES engines, Freshwater	RP061022
	R026007

**MARINE TRANSMISSIONS:**

PCM Engines are equipped with PCM Transmissions, standard or "V"-drive. If transmission parts are required, contact Pleasurecraft Engine Group for required parts.

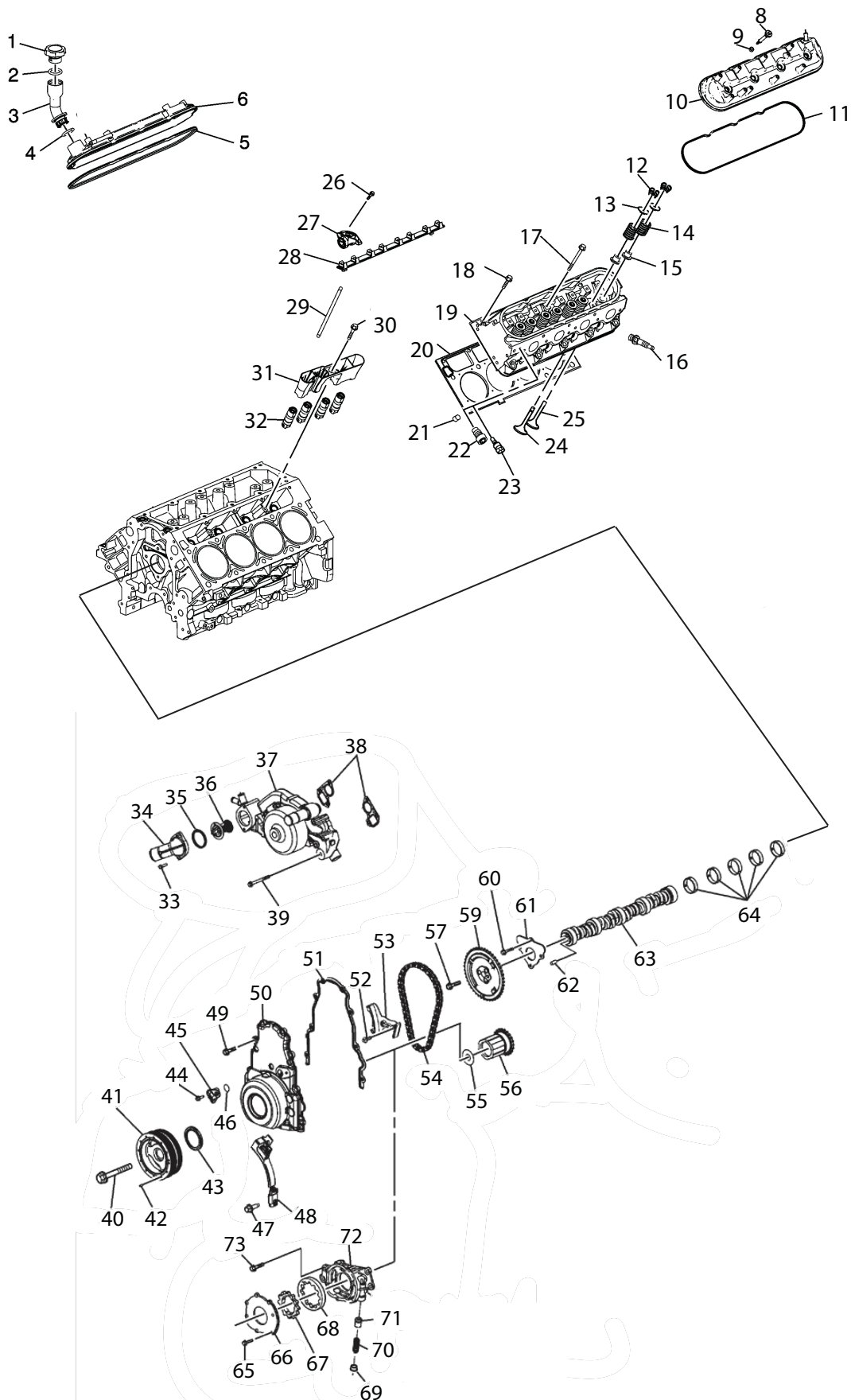
CYLINDER BLOCK ASSEMBLY



## CYLINDER BLOCK ASSEMBLY

ITEM	PART NO.	QTY.	DESCRIPTION	MODEL ID
*NI	RB001023		<b>Base Engine Assembly,</b>	
1	NSS	1	<b>Block,</b> Assembly	
2	TBD	8	<b>Bolt,</b> Connecting rod	
3	TBD	8	<b>Cap,</b> Connecting rod, (STD)	
4	R015016	8	<b>Bearing,</b> Connecting rod (STD)	
5	RA011014	8	<b>Connecting Rod</b> (STD) includes cap bolt bushing	
6	TBD	8	<b>Clip,</b> Wrist pin	
7	TBD	8	<b>Wrist pin,</b>	
8	TBD	8	<b>Piston,</b> (STD)	
9	TBD	8	<b>Rings,</b> (STD)	
10	TBD	4	<b>Bearings,</b> Crankshaft	
11	TBD	1	<b>Bearing,</b> Main thrust	
12	TBD	1	<b>Keyway,</b>	
13	TBD	1	<b>Crankshaft</b>	
14	TBD	1	<b>Gasket,</b> Rear seal cover	
15	TBD	1	<b>Cover,</b> Rear seal	
16	TBD	1	<b>Bolt,</b> Rear cover attaching	
17	TBD	5	<b>Cap,</b> crankshaft bearing	
18	TBD	10	<b>Bolt,</b> crankshaft bearing cap side	
19	TBD	10	<b>Bolt,</b> Main bearing cap	
20	TBD	10	<b>Bolt,</b> Main bearing cap	
21	TBD	1	<b>Baffle,</b> Oil pan	
22	TBD	1	<b>Nut,</b> Baffel retaining	
23	TBD	1	<b>Gasket,</b> Oil pan	
24	TBD	1	<b>Seal,</b> Rear main	

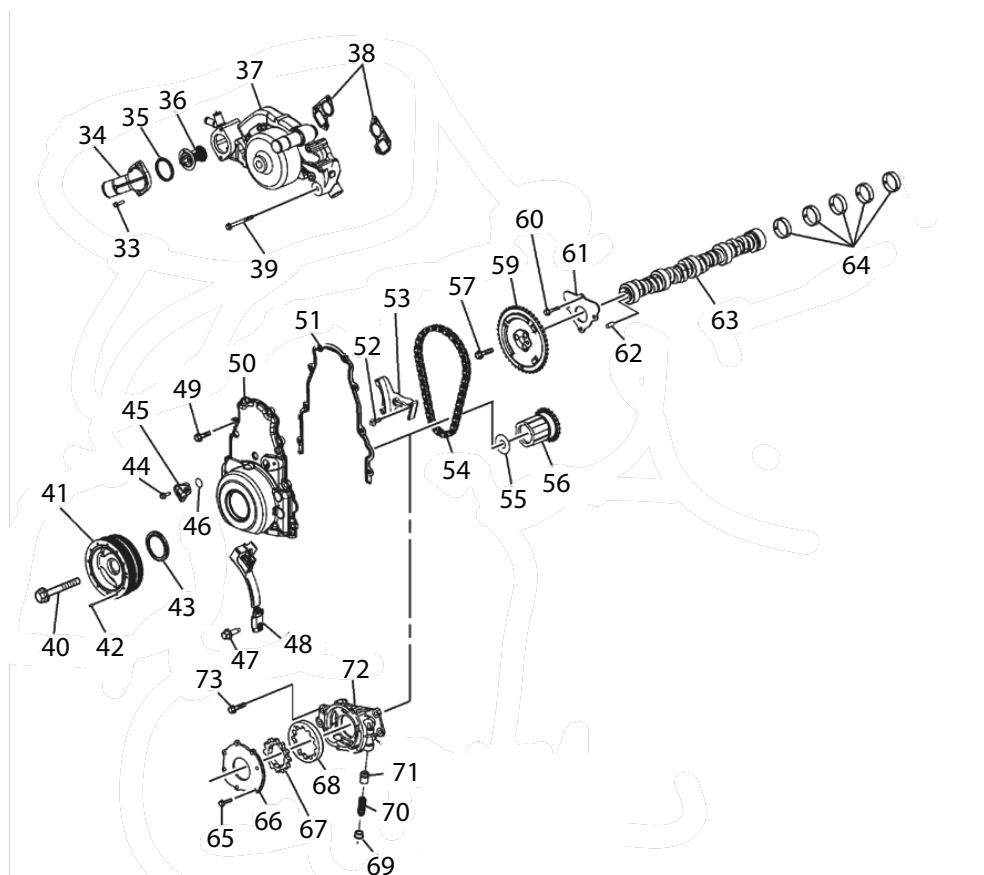
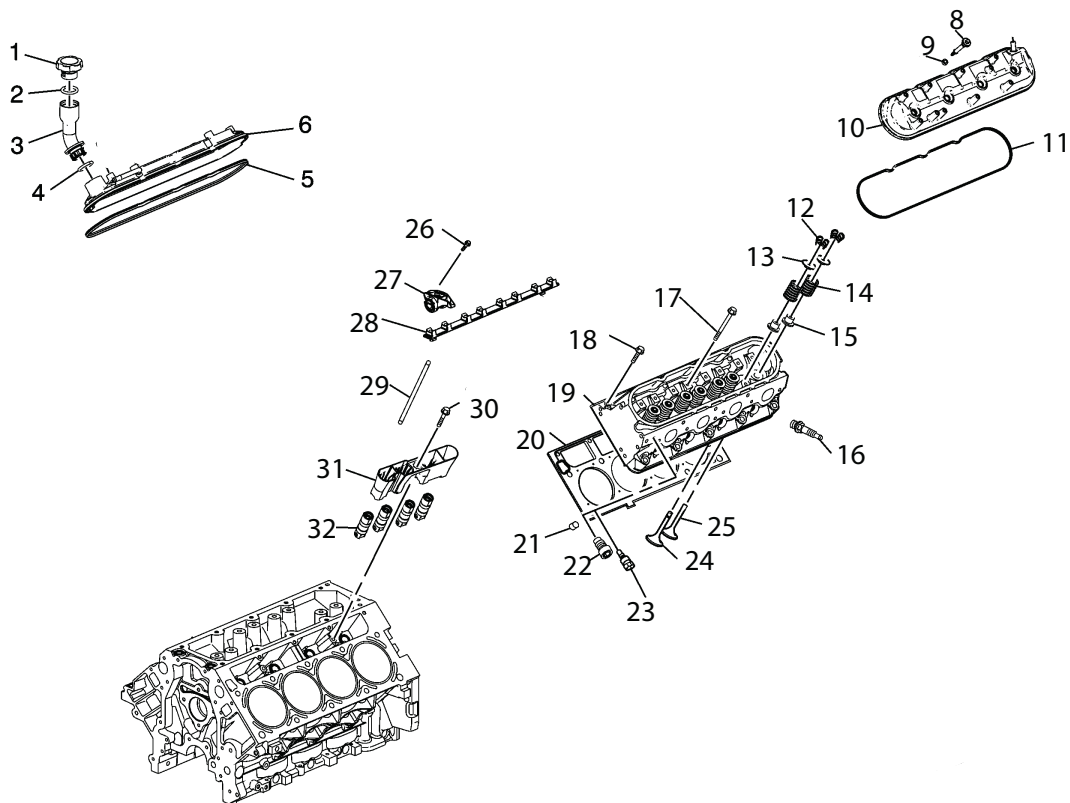
CYLINDER HEAD ASSEMBLY / FRONT COVER



## CYLINDER HEAD ASSEMBLY / FRONT COVER

ITEM	PART NO.	QTY.	DESCRIPTION	MODEL ID
1	TBD	1	<b>Cap</b> , Oil fill	
2	NSS	1	<b>O'ring</b> , Oil fill cap	
3	TBD	1	<b>Tube</b> , Oil fill	
4	TBD	1	<b>O'ring</b>	
5	TBD	2	<b>Gasket</b> , Valve cover	
6	RA033018	1	<b>Cover</b> , Valve, oil fill	
7				
8	TBD	8	Bolt, Valve cover attaching	
9	TBD	8	<b>Seal</b> ,	
10	RA033019	1	<b>Cover</b> , Valve	
11	TBD	1	<b>Gasket</b> , Valve cover	
12	TBD	16	Key, Valve stem	
13	TBD	16	Cap, Valve spring	
14	TBD	16	Spring, Valve	
15	TBD	16	Seal, Valve stem seal	
16	RP030012	8	<b>Spark Plug</b>	
17	TBD	0	<b>Bolt</b> , Cylinder head attaching	
18	TBD	0	<b>Spark Plug Wire Set</b>	
19	R020046	2	<b>Cylinder</b> , Head	
20	TBD	2	<b>Gasket</b> , Cylinder head	
21	TBD	0	<b>Pin</b> , Cylinder head locating	
22	TBD	0	<b>Plug</b> , Cylinder head	
23	TBD	0	<b>Sensor</b> , Coolant temp	
24	R043041	8	<b>Valve</b> , Intake	
25	R043042	8	<b>Valve</b> , Exhaust	
26	TBD	16	<b>Bolt</b> , Valve rocker arm attaching	
27	TBD	16	<b>Rocker arm</b> , valve	
28	TBD	2	<b>Guild</b> , Valve rocker arm	
29	R039024	16	<b>Push rod</b> , Valve	
30	TBD	8	<b>Bolt</b> , Valve lifter retainer	
31	TBD	8	<b>Retainer</b> , Valve lifter	
32	R004007	16	<b>Lifter</b> , Valve	
33	TBD	2	<b>Bolt</b> , Water neck attaching	
34	TBD	1	<b>Water neck</b>	
35	TBD	1	<b>Gasket</b> , Water neck housing	
36	R069073	1	<b>Cup Plug</b> , 30 mm	
37	RA057040	1	<b>Pump</b> , Water circulation, includes gaskets	
38	RM0281	2	<b>Gasket</b> , Circulation pump to block	
39	TBD	1	<b>Bolt</b> , Circulation pump attaching	
40	TBD	1	<b>Bolt</b> , Crankshaft balancer	
41	TBD	1	<b>Balancer</b> , Crankshaft	
42	NSS		<b>Balancer Weight</b> , No service	
43	TBD	1	<b>Seal</b> , Balancer	
44	TBD	1	<b>Bolt</b> , Camshaft sensor	
45	TBD	1	<b>Sensor</b> , Camshaft	

CYLINDER HEAD ASSEMBLY / FRONT COVER

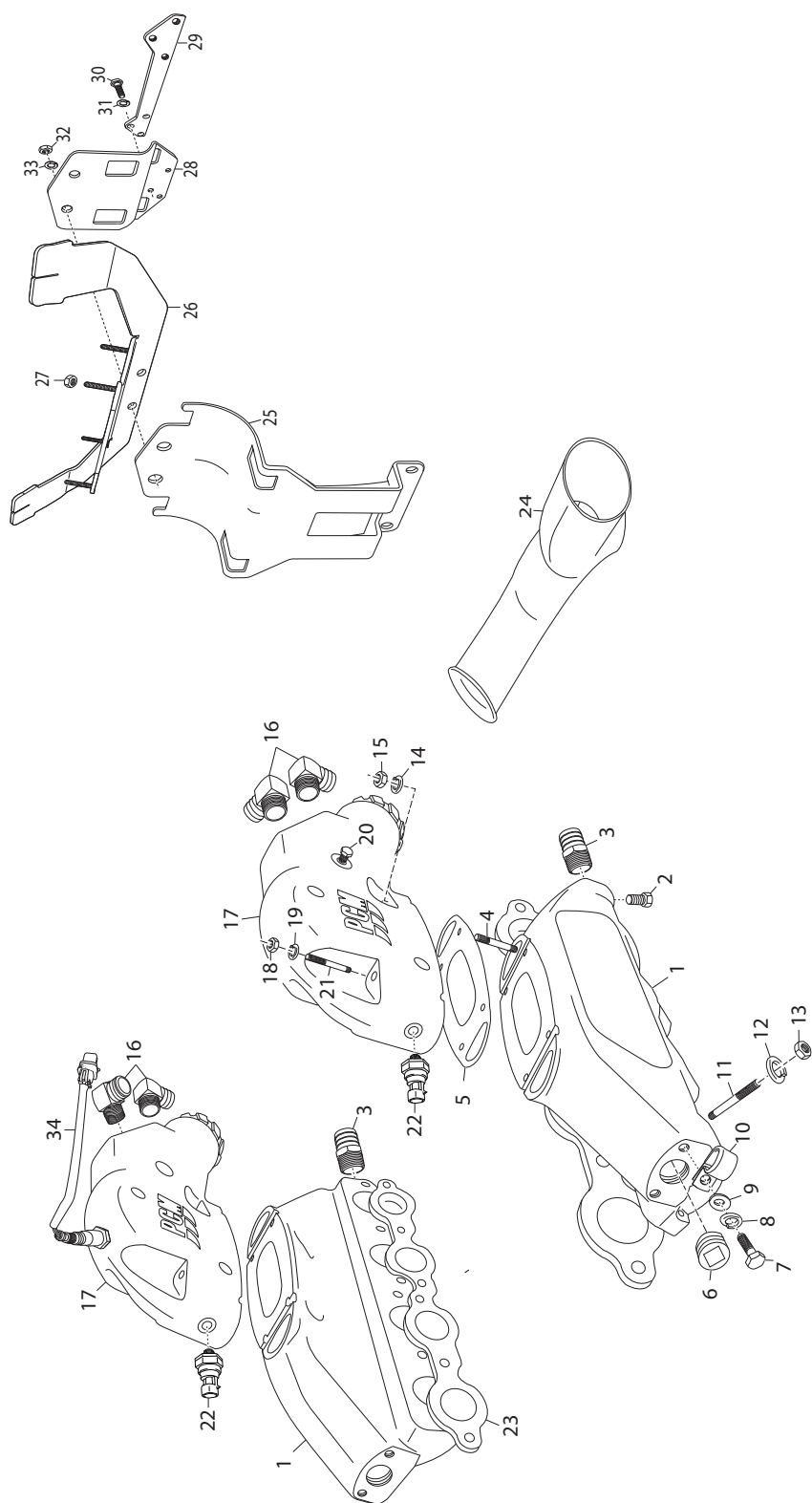




## CYLINDER HEAD ASSEMBLY / FRONT COVER

ITEM	PART NO.	QTY.	DESCRIPTION	MODEL ID
46	TBD	1	<b>Seal</b> , Camshaft sensor	
47	TBD	1	<b>Bolt</b> , Camshaft sensor wire harness	
48	TBD	1	<b>Harness</b> , Cam sesnor	
49	TBD	1	<b>Bolt</b> , Timing cover attaching	
50	TBD	1	<b>Cover</b> , Timing chain	
51	TBD	1	<b>Gasket</b> , Timing cover	
52	TBD	1	<b>Bolt</b> , Timing chain tensioner	
53	TBD	1	<b>Tensioner</b> , Timing chain	
54	TBD	1	<b>Chain</b> , Timing	
55	TBD	1	<b>Washer</b> , Camkshaft balancer	
56	TBD	1	<b>Gear</b> , Timing, lower	
57	TBD	1	<b>Bolt</b> , Timing gear attaching	
58		1		
59	TBD	1	<b>Gear</b> , Timing upper	
60	TBD	1	<b>Bolt</b> , Camshaft retainer	
61	TBD	1	<b>Retainer</b> , Camshaft	
62	TBD	1	<b>Dowel</b> , Camshaft	
63	TBD	1	<b>Camshaft</b>	
64	TBD	5	<b>Bearing Set</b> , camshaft R051040C x 2 R051010 x 2	
65	TBD	1	<b>Bolt</b> , Oil pump	
66	TBD	1	<b>Pump</b> , Oil	
67	TBD	1	<b>Gear</b> , Oil pump drive	
68	TBD	1	<b>Gear</b> , Oil pump drive	
69	TBD	1	<b>Plug</b> , Oil pressure relief valve	
70	TBD	1	<b>Spring</b> , Oil pressure relief valve	
71	TBD	1	<b>Valve</b> , Oil pressure relief	
72	TBD	1	<b>Pump</b> , Engine oil	

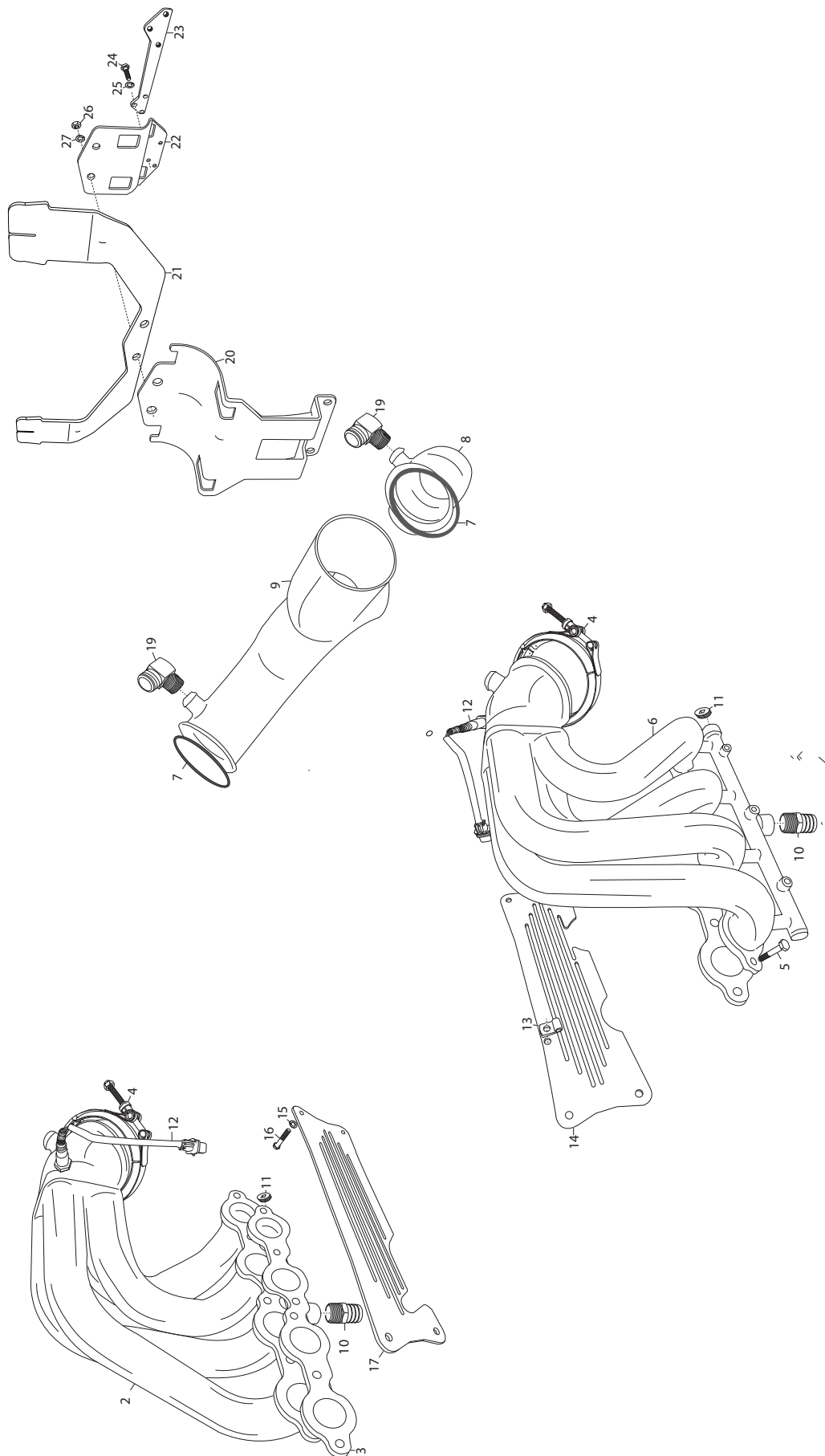
EXHAUST MANIFOLD AND COMPONENTS- XR MODEL



## EXHAUST MANIFOLD AND COMPONENTS- XR MODEL

ITEM	PART NO.	QTY.	DESCRIPTION	MODEL ID
1	R028023A	2	<b>Manifold</b> , Exhaust	
2	RS3557	4	<b>Plug</b> , 3/8	
3	R024073	2	<b>Connector</b> , Hose 3/4 NPT	
4	R031036	4	<b>Stud</b> , Elbow to manifold	
5	RM0274A	2	<b>Gasket</b> , Exhaust manifold	
6	RS3533	2	<b>Plug</b> , 3/4 NPT	
7	RS0279	2	<b>Bolt</b> , 5/16 x 5/8	
8	RS2179	2	<b>Lockwasher</b> , 5/16	
9	92200000	2	<b>Washer</b> , Flat 5/16	
10	R127103	1	<b>Clamp</b> ,	
11	R031035	12	<b>Stud</b> , Manifold to cylinder head	
12	RS2179	12	<b>Lockwasher</b> , 5/16	
13	RS7026	12	<b>Nut</b> , M8 x 1.25	
14	RS2180	8	<b>Lockwasher</b> , 3/8	
15	95310000	8	<b>Nut</b>	
16	R024006A	4	<b>Elbow</b> , 3/4 NPT x 1" hose barb	
17	R029016B	2	<b>Elbow</b> , Exhaust	
18	95310000	8	<b>Nut</b> , 3/8 x 24	
19	RS2180	8	<b>Lockwasher</b> , 3/8	
20	RS3539	2	<b>Plug</b> ,	
21	R031037	4	<b>Stud</b> , Elbow	
22	R020019	2	<b>Sender</b> , water temp	
23	RM0276	2	<b>Gasket</b> , Exhaust manifold to cylinder head	
24	R133005	1	<b>Crossover</b> , Exhaust	
25	R090391	1	<b>Bracket</b> , Heat exchanger mounting	
26	R090410	1	<b>Bracket</b> , Degas, ECM mounting	
27	R090391	1	<b>Bracket</b> , Heat exchanger mounting	
28	R090410	1	<b>Bracket</b> , Degas, ECM mounting	
29	R090394	1	<b>Bracket</b> , Intercooler cooler	
30	98334014	3	<b>Bolt</b> ,	
31	93934000	3	<b>Washer</b> ,	
32	97444000	2	<b>Nut</b> ,	
33	93944000	2	<b>Lockwasher</b> ,	
34	R020056	2	<b>Sensor</b> , Wide range 02	

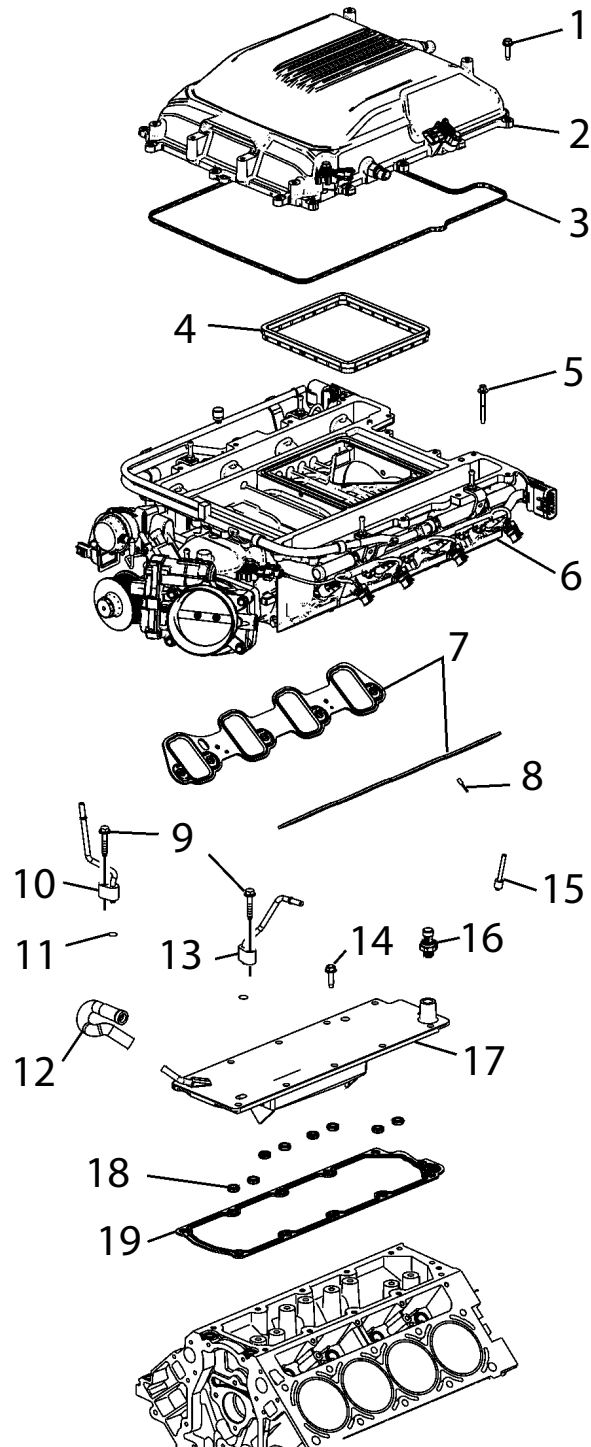
EXHAUST MANIFOLD AND COMPONENTS- XS MODEL



## EXHAUST MANIFOLD AND COMPONENTS- XS MODEL

ITEM	PART NO.	QTY.	DESCRIPTION	MODEL ID
1	RK028029-30	1	<b>Kit, LSA Exhaust, includes 2,3,4,5,6,7,8,9</b>	
2	NSS	1	<b>Manifold</b> , Exhaust"	
3	NSS	1	Gasket, Exhaust Manifold to cylinder head	
4	NSS	2	<b>Clamp</b> , Manifold to crossover	
5	NSS	1	<b>Bolt</b> , Manifold attaching	
6	NSS	1	<b>Manifold</b> , Exhaust	
7	NSS	1	<b>Gasket</b> , Manifold to crossover	
8	NSS	1	<b>Corner</b> , Exhaust	
9	NSS	1	<b>Y-pipe</b> , Exhaust crossover	
10	R024073	2	Connector, Hose	
11	RS3533	2	<b>Plug</b> , Pipe	
12	R020056	2	<b>Sensor</b> , 02 wide band	
13	R127039	1	<b>Clamp</b>	
14	R109060	1	<b>Plate</b> , Rocker cover	
15	RS2178	9	<b>Lockwasher</b>	
16	99225016	9	<b>Bolt</b> ,	
17	R109059	1	<b>Plate</b> , Rocker cover	
18				
19	R024006A	2	<b>Elbow</b> , 3/4 NPT	
20	R090391	1	<b>Bracket</b> , Heat exchanger mounting	
21	R090406	1	<b>Bracket</b> , Degas rear mounting	
22	R090394	1	<b>Bracket</b> , Intercooler cooler	
23	R090359A	1	<b>Bracket</b> , Remote oil filter	
24	98334014	3	<b>Screw</b>	
25	93934000	3	<b>Washer</b>	
26	97444000	2	<b>Nut</b> ,	
27	93944000	2	<b>Lockwasher</b> ,	

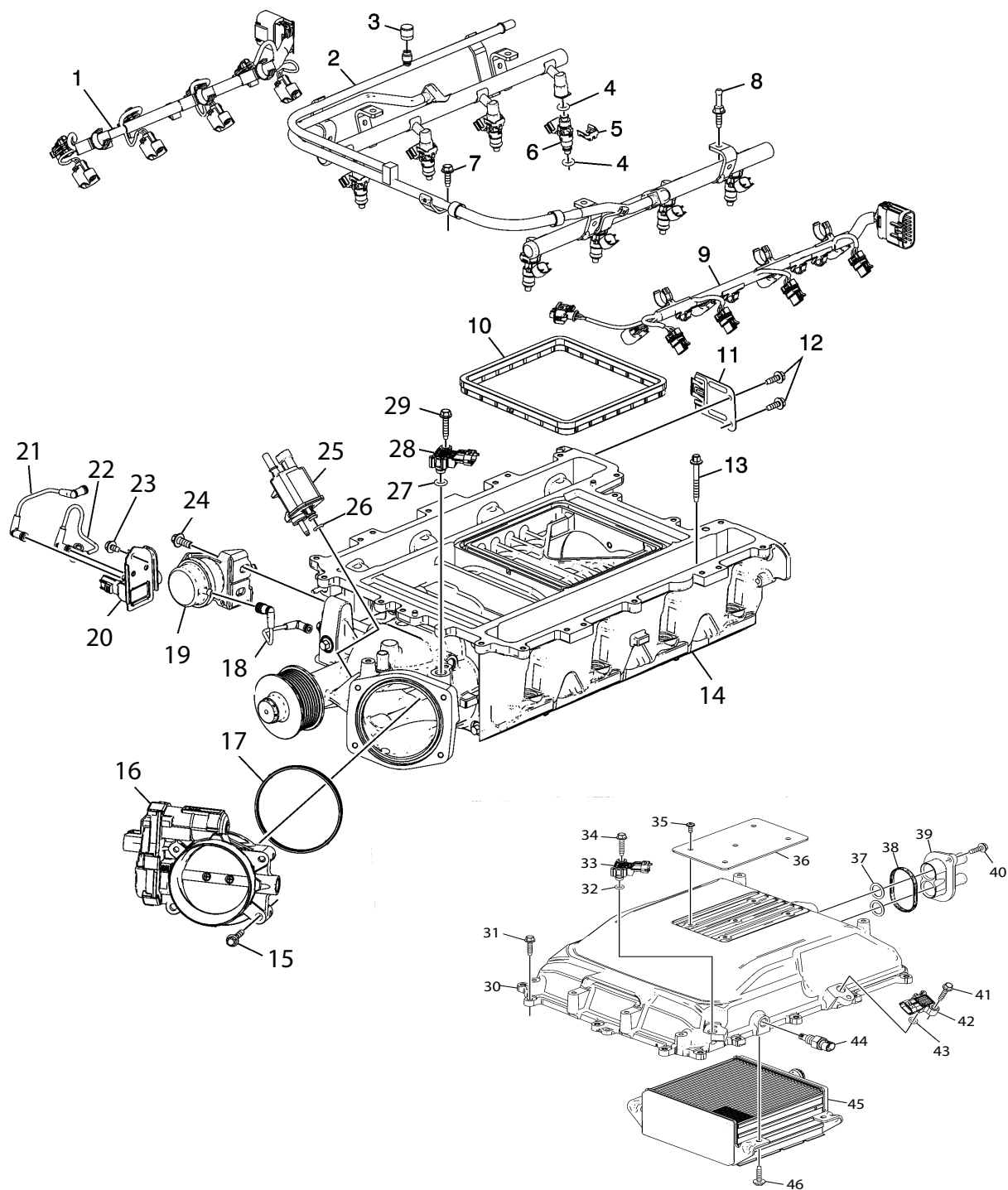
# INTAKE MANIFOLD COMPONENTS



## INTAKE MANIFOLD COMPONENTS

ITEM	PART NO.	QTY.	DESCRIPTION	MODEL ID
1	TBD	1	<b>Bolt</b> , Supercarger cover	
2	TBD	1	<b>Cover</b> , Charge air cooler (specify Black or Red )	
3	TBD	1	<b>Seal</b> , Charge air cooler cover	
4	TBD	1	<b>Insulator</b> , Charge air cooler	
5	TBD	1	<b>Gasket</b> , cover	
6	RA053004	1	<b>Supercharger</b> Assembly	
7	TBD	1	<b>Gasket</b> , Intake manifold	
8	TBD	1	<b>Rivet</b> , Intake manifold gasket	
9	TBD	1	<b>Bolt</b> , Engine coolant air bleed pipe	
10	TBD	1	<b>Pipe</b> , Engine coolant air bleed	
11	TBD	1	<b>Seal</b> , Engine coolant air bleed	
12	TBD	1	<b>Hose</b> , PVC	
13	TBD	1	<b>Pipe</b> , Engine coolant air bleed	
14	TBD	1	<b>Bolt</b> , Valley cover	
15	TBD	1	<b>Vent</b> , Engine coolant air bleed	
16	TBD	1	<b>Sensor</b> , Engine oil pressure	
17	TBD	1	<b>Cover</b> , Valley	
18	TBD	1	<b>Seal</b> , Valley cover	
19	TBD	1	<b>Gasket</b> , Valley cover	

# INTAKE MANIFOLD COMPONENTS

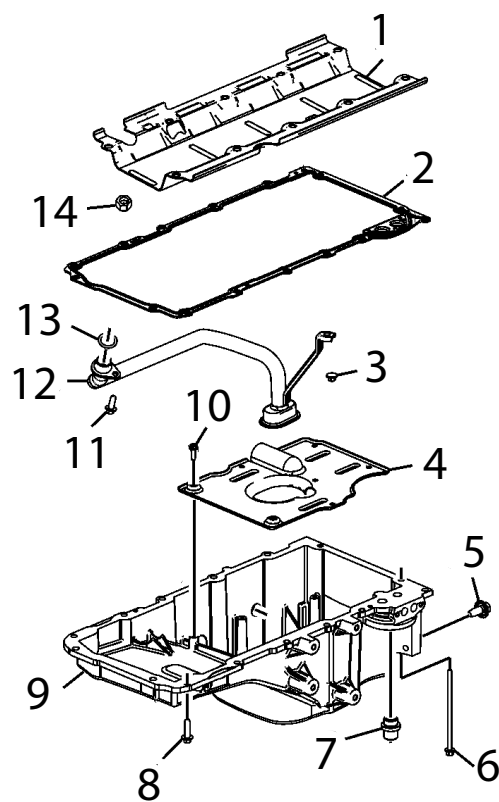
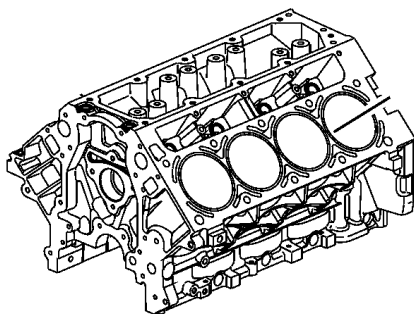




## INTAKE MANIFOLD COMPONENTS

ITEM	PART NO.	QTY.	DESCRIPTION	MODEL ID
1	TBD	1	<b>Wire harness</b> , Fuel injector	
2	TBD	1	<b>Fuel rail</b> , Multi port	
3	TBD	1	<b>Cap</b> , Fuel rail service port	
4	TBD	1	<b>Seal</b> , Fuel injector	
5	TBD	8	<b>Retainer</b> , Fuel injector	
6	TBD	8	<b>Fuel injector</b>	
7	TBD	4	<b>Bolt</b> , Fuel injector rail	
8	TBD	1	<b>Stud</b> , Fuel injector rail	
9	TBD	1	<b>Wire harness</b> , Fuel injector	
10	TBD	1	<b>Insulator</b> , Charge air cooler	
11	TBD	1	<b>Bracket</b> , Wiring harness connector	
12	TBD	1	<b>Bolt</b> , Wiring harness bracket	
13	TBD	1	<b>Bolt</b> , Supercharger mounting	
14	RA053004	1	<b>Supercharger Assembly</b>	
15	TBD	4	<b>Bolt</b> , Throttle body	
16	TBD	1	<b>Throttle body</b> , Assembly	
17	TBD	1	<b>O'ring</b> , Throttle body	
18	TBD	1	<b>Vacuum tube</b> , Charge bypass	
19	TBD	1	<b>Actuator</b> , Supercharger bypass	
20	TBD	1	<b>Bracket</b> , Charge air bypass	
21	TBD	1	<b>Tube</b> , Bypass valve actuator	
22	TBD	1	<b>Tube</b> , Charge air bypass	
23	TBD	1	<b>Bolt</b> , Charge air bypass	
24	TBD	1	<b>Bolt</b> , Supercharger bypass actuator	
25	TBD	1	<b>Valve</b> , Emission canister purge valve	
26	TBD	1	<b>Seal</b> , Emission canister purge valve	
27	TBD	1	<b>Seal</b> , Supercharger inlet air pressure sensor	
28	TBD	1	<b>Sensor</b> , Supercharger inlet air pressure sensor	
29	TBD	1	<b>Bolt</b> , Supercharger inlet air pressure sensor	
30	TBD	1	<b>Cover</b> , Charge air cooler	
31	TBD	1	<b>Bolt</b> , Charge air cover attaching	
32	TBD	1	<b>Seal</b> , Barometric pressure sensor	
33	TBD	1	<b>Sensor</b> , Barometric pressure	
34	TBD	1	<b>Bolt</b> , Barometric pressure sensor	
35	TBD	1		
36	TBD	1	<b>Nameplate</b> ,	
37	TBD	1	<b>Seal</b> , Charge air cooler coolant pipe	
38	TBD	1	<b>Seal</b> , Charge air cooler coolant outlet pipe assembly	
39	TBD	1	<b>Pipe Assembly</b> , Charge air cooler outlet pipe	
40	TBD	1	<b>Bolt</b> , Charge air cooler retaining	
41	TBD	1	<b>Bolt</b> , Supercharger air outlet pressure sensor	
42	TBD	1	<b>Sensor</b> , Supercharger air outlet pressure	
43	TBD	1	<b>Seal</b> , Supercharger air outlet sensor	
44	R020062	1	<b>Sensor</b> , Intake air	
45	RK147059	1	<b>Charge air cooler</b>	
46	TBD	4	<b>Bolt</b> , Intercooler mounting	

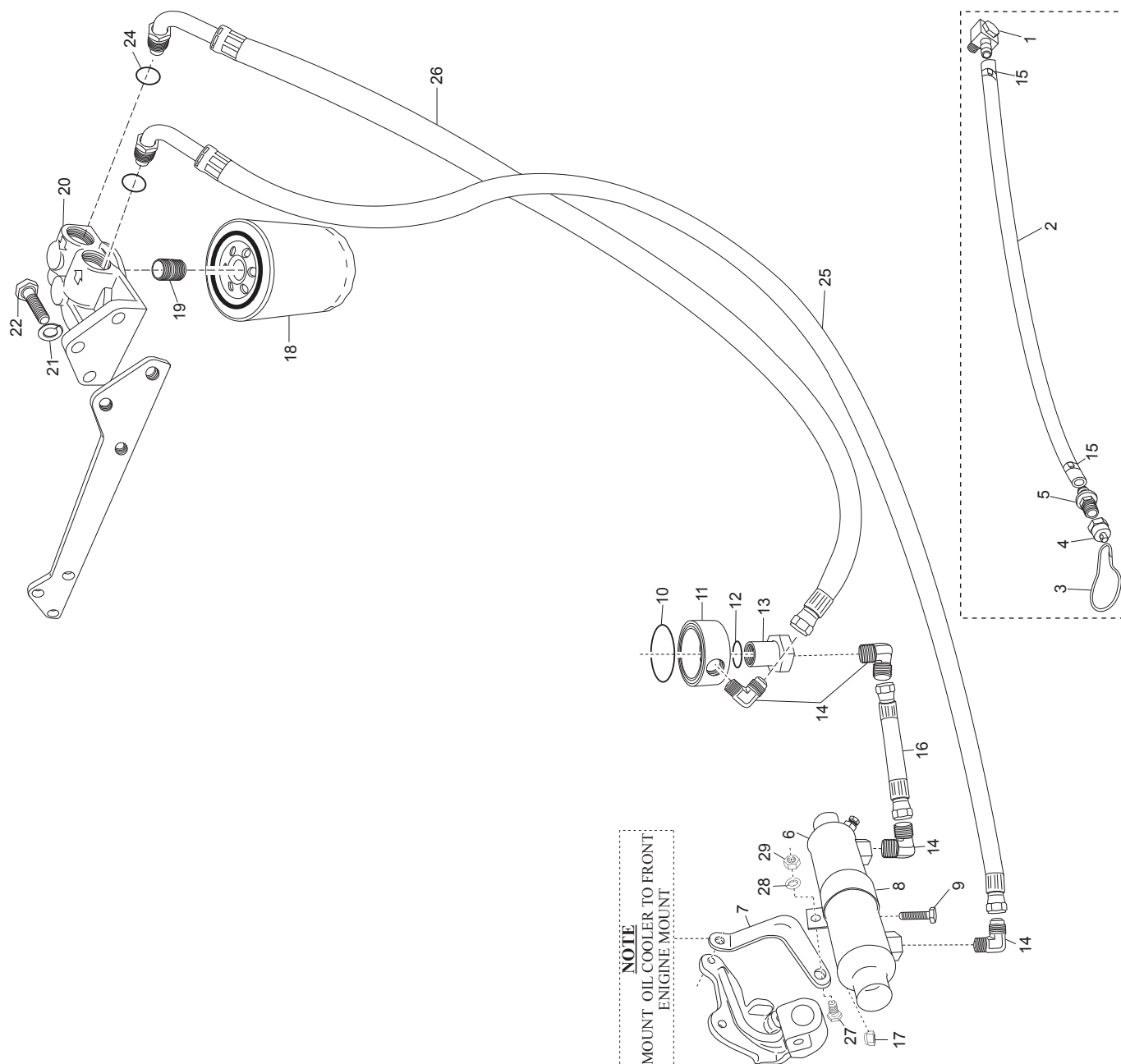
OIL PAN and OIL PUMP ASSEMBLY



## OIL PAN and OIL PUMP ASSEMBLY

ITEM	PART NO.	QTY.	DESCRIPTION	MODEL ID
1	TBD	1	<b>Baffle</b> , Oil pan	15-620/621
2	TBD	1	<b>Gasket</b> , Oil pan	
3	TBD	1	<b>Bolt</b> , Oil pan pickup	
4	TBD	1	<b>Baffle</b> , Oil pan	
5	TBD	1	<b>Plug</b> , Oil pan drain	
6	TBD	1	<b>Bolt</b> , Oil pan attaching	
7	TBD	1	<b>Adaptor</b> , Oil filter	
8	TBD	1	<b>Bolt</b> , Oil pan attaching	
9	R005027	1	<b>Oil pan</b>	15-620/621
9A	R005027	1	<b>Oil pan</b> , OEM specific	
10	TBD	1	<b>Bolt</b> , Baffle oil pan	
11	TBD	1	<b>Bolt</b> , Oil tube pickup	
12	TBD	1	<b>Tube</b> , Oil pump pick up	
12A	R074033	1	<b>Tube</b> , Oil pump pick up, OEM specific	
13	TBD	1	<b>O'ring</b> , Oil pump pick up tube	
14	TBD	1	<b>Nut</b> , Baffle attaching	

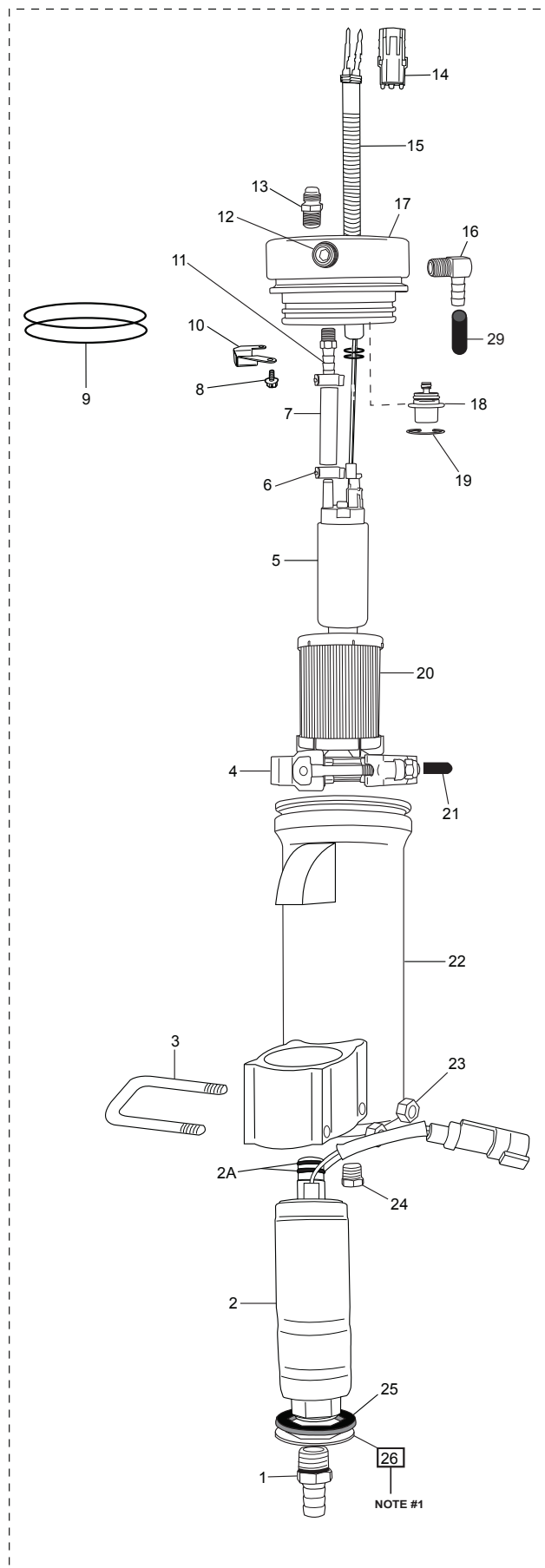
# REMOTE OIL FILTER COMPONENTS



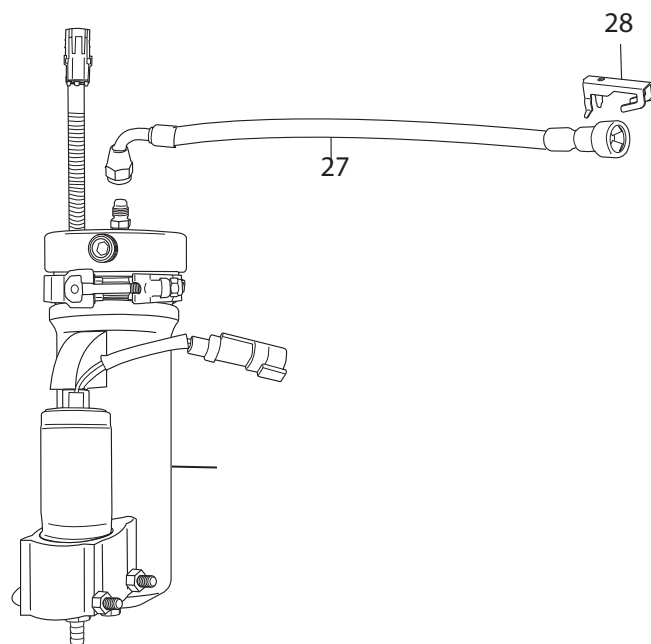
## REMOTE OIL FILTER COMPONENTS

ITEM	PART NO.	QTY.	DESCRIPTION	MODEL ID
1	R024213	1	<b>Fitting, oil drain</b>	
2	R045049	2	<b>Hose, 3/8 oil resistant</b>	
3	R190123	1	<b>Hook, Oil drain hose</b>	
4	R024066A	1	<b>Cap, 1/4 pipe</b>	
5	R024061	1	<b>Connector, Hose</b>	
6	R147049	1	<b>Cooler, engine oil</b>	
6A	R143175	1	<b>Decal, "Hot", oil header</b>	
7	R090404	1	<b>Bracket, Oil cooler</b>	
8	R090010	1	<b>Bracket, oil cooler</b>	
9	RS0256	1	<b>Bolt, 1/4 x 20</b>	
10	R047240	1	<b>O'ring, remote oil</b>	
11	R079067	1	<b>Adaptor, remote oil</b>	
12	R047202	1	<b>O'ring, remote oil</b>	
13	R079075	1	<b>Retainer, remote oil</b>	
14	R024184	4	<b>Fitting, elbow 1/2 NPT x 5/8</b>	
15	R127087C	1	<b>Clamp, oetiker</b>	
16	RA045103D	1	<b>Hose assembly,</b>	
17	RS2058	1	<b>Nut,</b>	
18	R077001	1	<b>Filter, oil</b>	
19	R024203	1	<b>Nipple, oil filter</b>	
20	R079066	1	<b>Header, oil filter</b>	
21	RS2179	3	<b>Lockwasher,</b>	
22	98333020	3	<b>Bolt,</b>	
23				
24	R047245	2	<b>O'ring, oil line</b>	
25	RA045120D	1	<b>Hose assembly</b>	
26	RA045120F	1	<b>Hose assembly</b>	
27	RS0302	1	<b>Bolt,</b>	
28	RS21080	1	<b>Lockwasher</b>	
29	RS1028	1	<b>Nut,</b>	

# FUEL CONTROL CELL (FCC) COMPONENTS



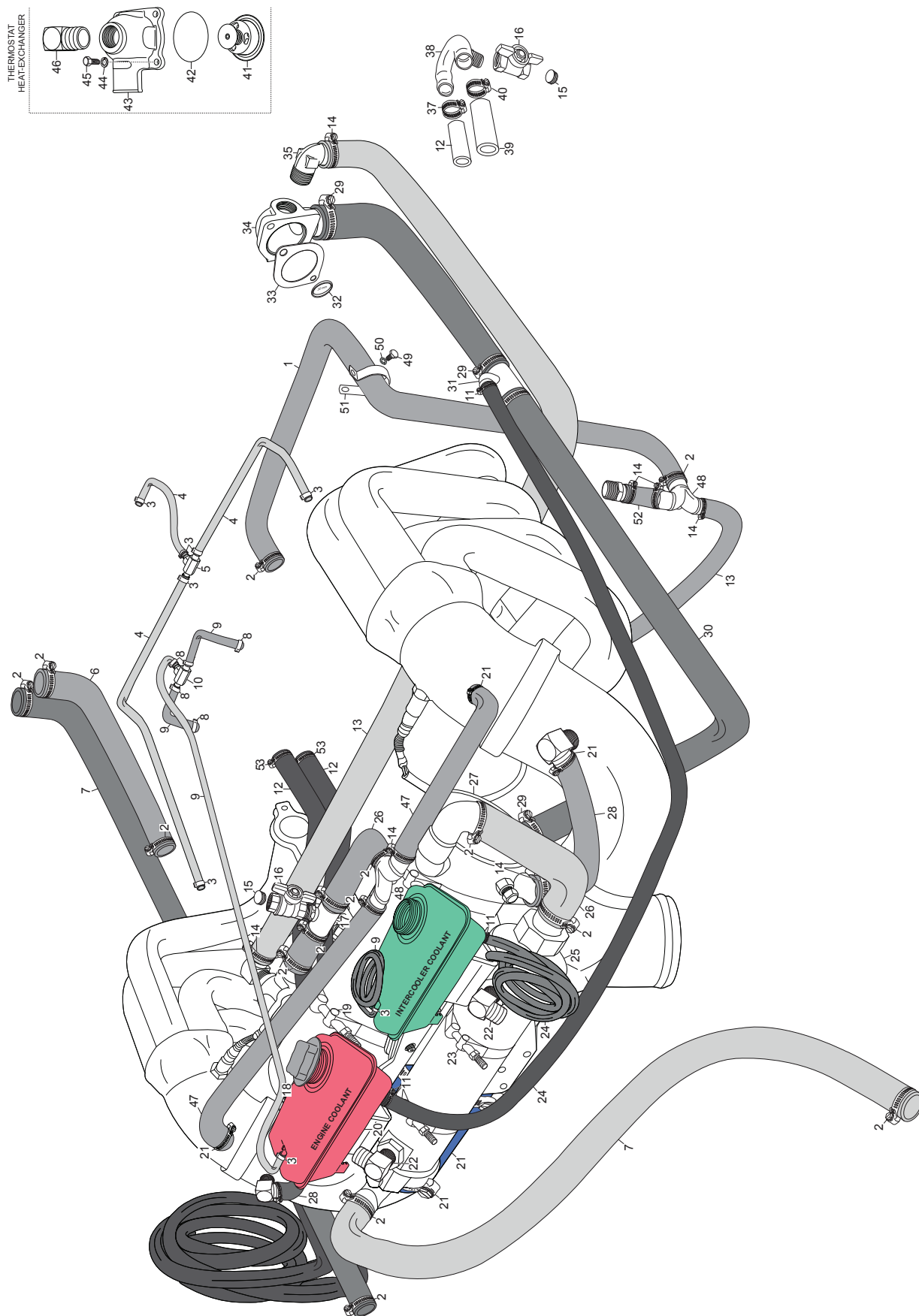
NOTE #1



## FUEL CONTROL CELL (FCC) COMPONENTS

ITEM	PART NO.	QTY.	DESCRIPTION	MODEL ID
1	R024232	1	<b>Fitting</b> , 3/8 barb	
2	RA080036	1	<b>Fuel Pump</b> , Low pressure	
2A	R047252	2	<b>O'ring</b> ,	
3	R127102	1	<b>Clamp</b> , Fuel pump retention	
4	R127010	1	<b>Clamp</b> , FCC canister	
5	RA080027	1	<b>Fuel Pump</b> , High pressure	
6	R127087	2	<b>Clamp</b> , Oetiker 5/8	
7	R045098B	1	<b>Hose</b> ,	
8	91624025	2	<b>Screw</b> ,	
9	R047241	2	<b>O'ring</b> , FCC caniter	
10	R012030	1	<b>Baffle</b> , FCC	
11	R025219	1	<b>Fitting</b> , 1/8 NPT	
12	RS3550	2	<b>Plug</b> , Pipe	
13	R024163A	1	<b>Fitting</b> , 1/4 NPT	
14	7172040	1	<b>Connector</b> ,	
15	R121085A	1	<b>Harness</b> , FCC passthru	
16	R024255	1	<b>Elbow</b> , 1/4 NPT x3/8 barb	
17	R079070A	2	<b>Head</b> , FCC	
18	R088004	2	<b>Regulator</b> , Fuel pressure	
19	R048070	1	<b>Retainer</b> , ring	
20	R080026	1	<b>Filter</b> , Feul water seperator	
21	R128002	1	<b>Cover</b> ,	
22	R089008	2	<b>Canister</b> ,FCC	
23	95004300	2	<b>Nut</b> ,	
24	R069077	1	<b>Plug</b> , Pipe	
25	R094045	1	<b>Isolator</b> , LPP pump	
26	RA080037A	1	<b>FCC</b> , Assembly	
27	RA085090F	1	<b>Fuel line</b> , FCC to rail	
28	R127100	1	<b>Retainer</b> , Fuel line	

# HEAT EXCHANGER and COMPONENTS - XS Engines

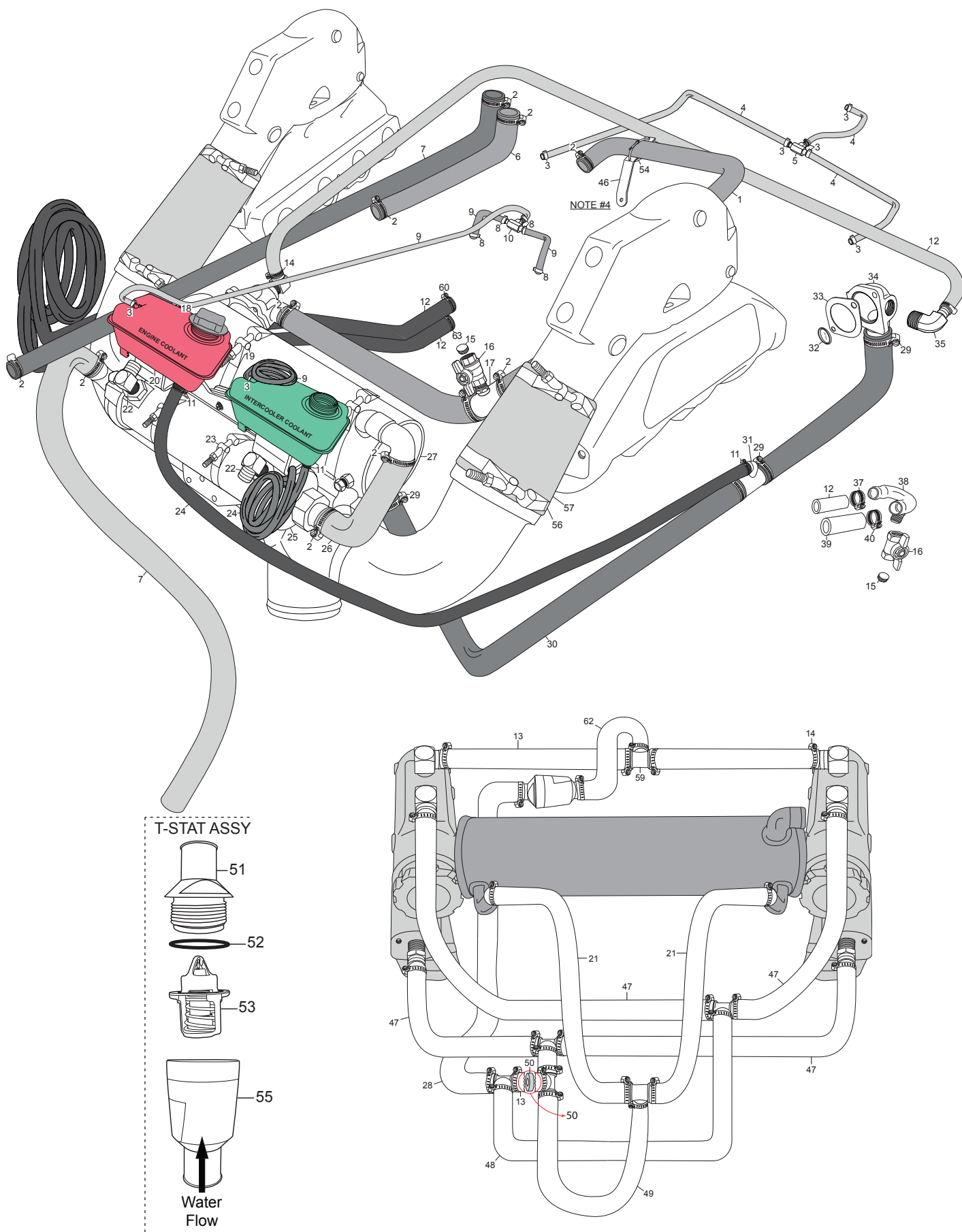




## HEAT EXCHANGER and COMPONENTS - XS Engines

ITEM	PART NO.	QTY.	DESCRIPTION	MODEL ID
1	R045201	1	<b>Hose</b> , circ pump to Heat Exchanger	
2	RS3858	14	<b>Clamp</b> , hose #20 ( 1-1/4 )	
3	R127087	7	<b>Clamp</b> , Oetiker, 5/8	
4	R045049	13ft	<b>Hose</b> , 3/8 oil resistant line	
5	R024257	1	<b>Fitting</b> , Tee 3/8 x 3/8 x 3/8	
6	R045152	1	<b>Hose</b> , Cooler to RWP ( v-drive )	
7	20865	10ft	<b>Hose</b> , wire reinforced 1-1/4	
8	R127087A	5	<b>Clamp</b> , Oetiker 1/2	
9	R045132	15ft	<b>Hose</b> , 1/4 bulk, bottle to vent	
10	R024245	1	<b>Fitting</b> , Tee 1/4 hose barb	
11	RS3854	3	<b>Clamp</b> , Hose #12 ( 7/8 )	
12	20806	15ft	<b>Hose</b> , Bulk HTR 5/8	
13	R045107	10ft	<b>Hose</b> , 1" ID	
14	RS3851	12	<b>Clamp</b> , Hose #16	
15	444705	2	<b>Pipe Plug</b>	
16	R035039A	2	<b>Valve</b> , Ball 1/2 x 1/2	
17	R024249A	1	<b>Fitting</b> , Tee 1-1/4 x 1/2	
18	R034035	2	<b>Cap</b> , Degas Bottle	
19	R171009	2	<b>Clamp</b> , Heat Exchanger mounting	
20	R146001	2	<b>Bottle</b> , Degas	
21	RK028029-30		<b>Kit</b> , 6.2L S/C Exhaust	
22	R024126	2	<b>Elbow</b> , 1/2 x 5/8	
23	RS3866	2	<b>Clamp</b> , Hose #52	
24	R045153	14ft	<b>Hose</b> , 3/4 Bulk"	
25	RA147055	1	<b>Cooler</b> , Intercooler 3" x 12"	
26	18402	2	<b>Hose</b> , preformed	
27	RA147054A	1	<b>Heat Exchanger 6.2L S/C</b>	
28	R045190	2	<b>Hose</b>	
29	RS3868	4	<b>Clamp</b> , Hose #24	
30	R045202	1	<b>Hose</b> , Heat Exchanger to Circ Pump	
31	R024250	1	<b>Fitting</b> , Tee 1-1/2x 1-1/2 x 3/4	
32	R0069073	1	<b>Cap</b> , Plug 30mm	
33	RM0275	1	<b>Gasker</b> , Thermosat	
34	R025036	1	<b>Housing</b> , Thermosat	
35	727003	1	<b>Elbow</b> , 90 degree	
36				
37	R127087G	2	<b>Clamp</b> , Oetiker 1"	
38	R024210B	1	<b>U-tube</b> , circ pump	
39	R045153	1	<b>Hose</b> , 3/4 Bulk	
40	R127087G	2	<b>Clamp</b> , Oetiker	
41	R026007	1	<b>Thermostat</b> , 170 Degree w/hole	
42	R047256	1	<b>Oring</b> , Thermostat Housing	
43	R025045	1	<b>Housing</b> , Thermostat	
44	93920000	4	<b>Lockwasher</b> M6	
45	98223016	4	<b>Bolt</b> , M6 x 16	
46	R024006A	1	<b>Elbow</b> , 3/4 NPT x 1" barb	
47	R045187	1	<b>Hose</b> ,	
48	R024054D	2	<b>Fitting</b> , Tee 1 x 1 x 1-1/4	
49	98443025	1	<b>Bolt</b> , M10 x 1.5 x 25	
50	93940000	1	<b>Washer</b> , M10	
51	R127103	1	<b>Clamp</b> ,	
52	R045124	1	<b>Hose</b> ,	
53	RS3864	2	<b>Clamp</b> , Hose # 8	

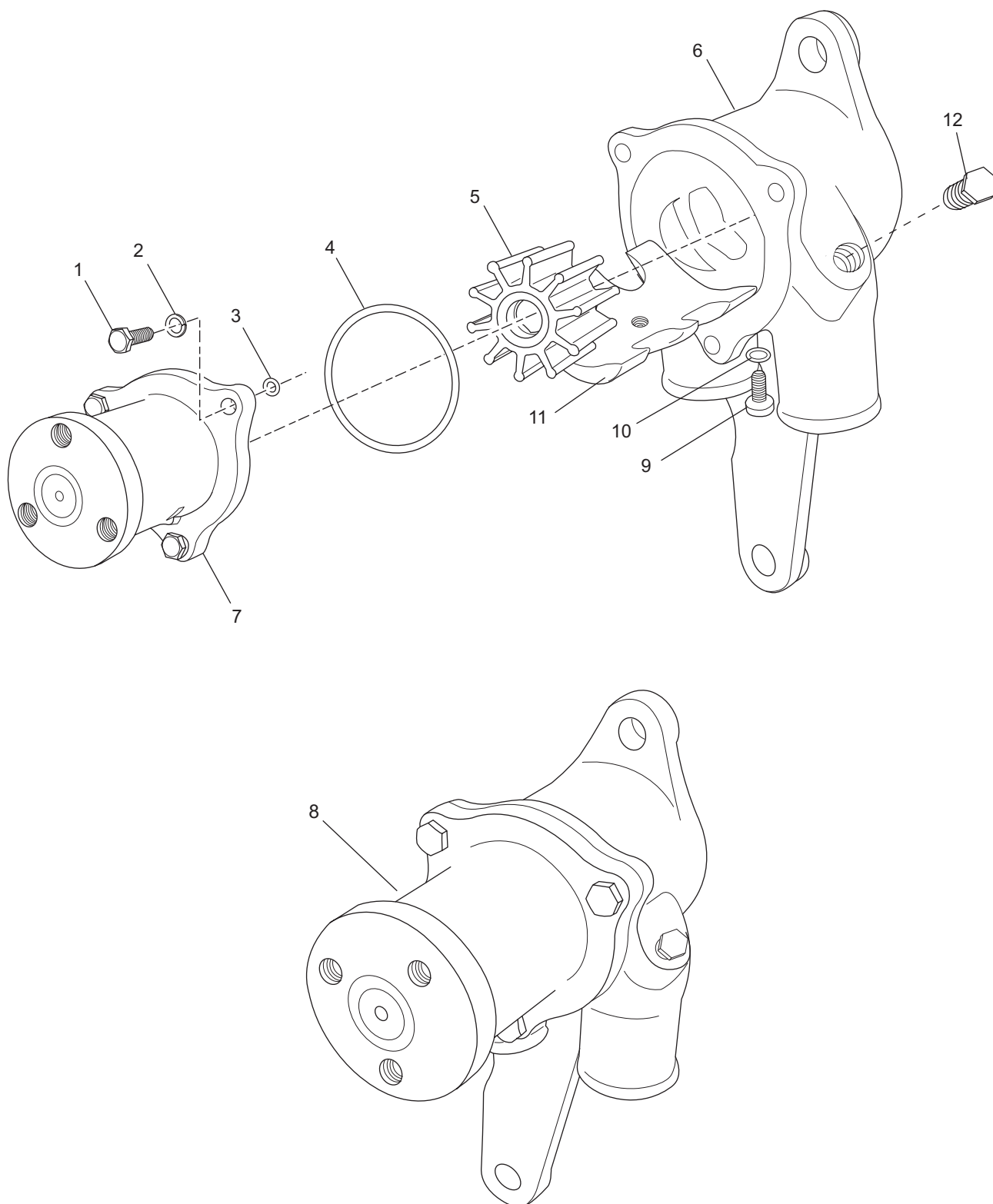
# HEAT EXCHANGER and COMPONENTS - XR Engines



## HEAT EXCHANGER and COMPONENTS - XR

ITEM	PART NO.	QTY.	DESCRIPTION	MODEL ID
1	R045201	1	<b>Hose</b> , Circ pump to Heat Exchanger	
2	RS3858	12	<b>Clamp</b> , Hose #20	
3	R127087	7	<b>Clamp</b> , Hose Oetiker 5/8	
4	R045049	13ft	<b>Hose</b> , 3/8	
5	R024257	1	<b>Fitting</b> , Tee	
6	R045152	1	<b>Hose</b> , Cooler/RWP v-drive	
7	20865	10ft	<b>Hose</b> , wire reinforced 1-1/4	
8	R127087A	5	<b>Clamp</b> , Oetiker 1/2	
9	R045132	15ft	<b>Hose</b> , 1/4 hose bottle to vent	
10	R024245	1	<b>Fitting</b> , Tee	
11	RS3854	3	<b>Clamp</b> , Hose #12	
12	20806	20ft	<b>Hose</b> , 5/8 HTR	
13	R045107	5ft	<b>Hose</b> , 1" ID	
14	RS3851	30	<b>Clamp</b> , Hose #16	
15	444705	2	<b>Pipe</b> plug	
16	R035039A	2	<b>Valve</b> , Ball	
17	R024249A	1	<b>Fitting</b> , Tee	
18	R034035	2	<b>Cap</b> , Degas bottle	
19	R171009	2	<b>Clamp</b> ,	
20	R146001	2	<b>Bottle</b> , Degas	
21	R045208	2	<b>Hose</b> ,	
22	R024126	2	<b>Elbow</b> ,	
23	RS3866	2	<b>Clamp</b> , Hose #52	
24	R045153	14ft	<b>Hose</b> , 3/4 ID	
25	RA147055	1	<b>Cooler</b> , Intercooler	
26	18402	2	<b>Hose</b> ,	
27	RA147054A	1	<b>Heat Exchanger</b>	
28	R045207	1	<b>Hose</b> ,	
29	RS3868	4	<b>Clamp</b> , Hose #24	
30	R045202	1	<b>Hose</b> , Heat Exchanger to circ pump	
31	R024250	1	<b>Fitting</b> , Tee	
32	R0069073	1	<b>Cap</b> , Plug 30 mm	
33	RM0275	1	<b>Gasket</b> , Thermostat	
34	R025036	1	<b>Housing</b> , Thermostat	
35	R024255	2	<b>Fitting</b> , Elbow	
36				
37	R127087F	2	<b>Clamp</b> , Oetiker 1"	
38	R024210B	1	<b>U-tube</b> , circ pump	
39	R045153	1	<b>Hose</b> , 3/4 ID	
40	R127087G	2	<b>Clamp</b> , Oetiker 1-1/16	
41	R026007	1	<b>Thermostat</b> , 170 degree w/hole	
42	R047256	1	<b>O'ring</b> , Thermostat housing	
43	R025045	1	<b>Housing</b> , Thermostat	
44	93920000	4	<b>Lockwasher</b> ,	
45	98223016	4	<b>Bolt</b> ,	
46	R090413	1	<b>Bracket</b> , Hose support	
47	R045209	4	<b>Hose</b>	
48	R045206	1	<b>Hose</b> ,	
49	R045187	1	<b>Hose</b> , Coolant	
50	R012031	1	<b>Orifice</b> Tube,	
51	R025047A	1	<b>Housing</b> , Thermostat outlet	
52	R047260	1	<b>O'ring</b>	
53	R026009A	1	<b>Thermostat</b> 143 degree	

RAW WATER COOLING PUMP

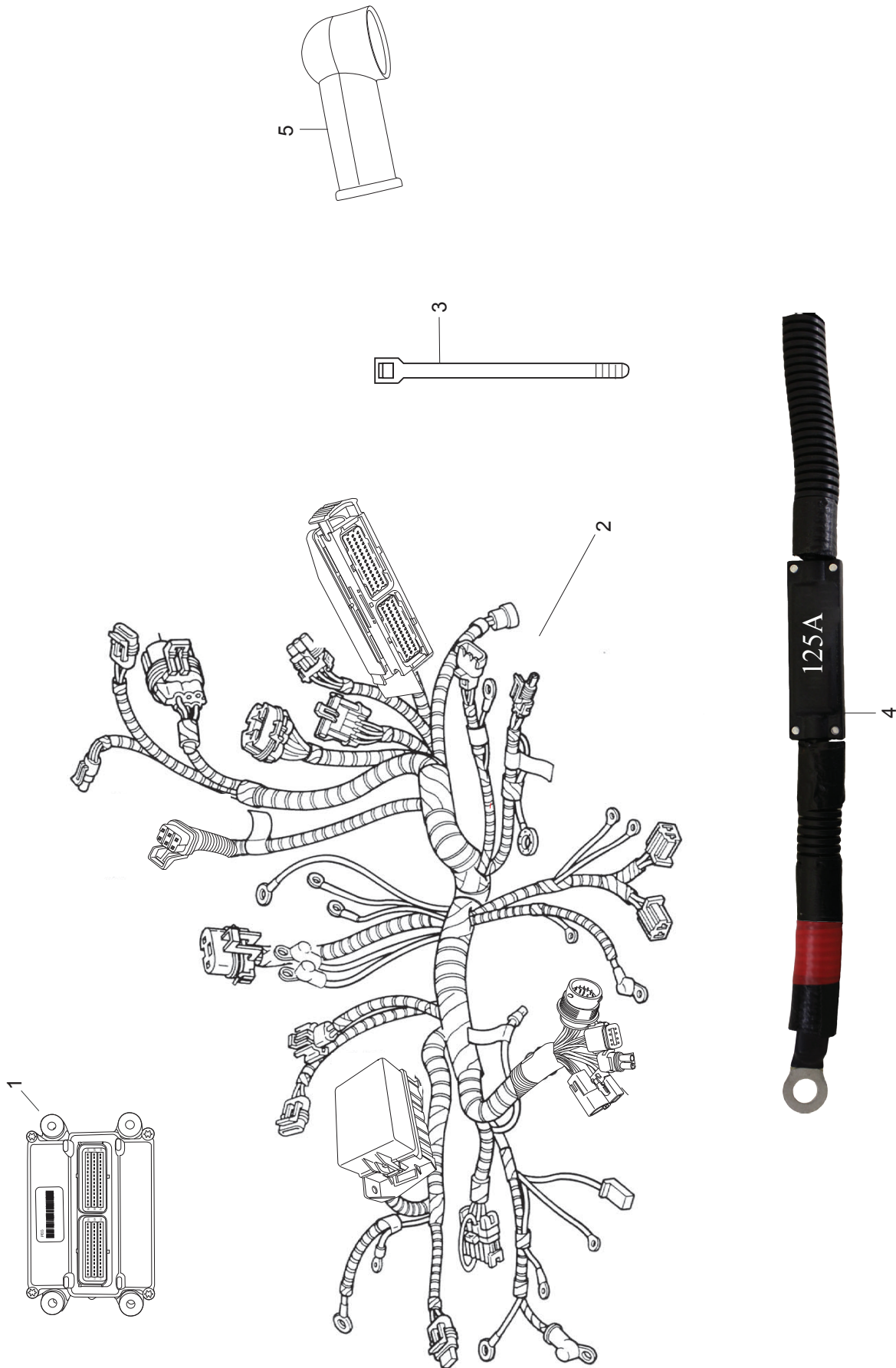


PC60P\_022  
05-23-07

## RAW WATER COOLING PUMP

ITEM	PART NO.	QTY.	DESCRIPTION	MODEL ID
1	98224020	3	<b>Bolt</b> , bearing housing attaching	
2	93924000	3	<b>Lockwasher</b> , bearing housing attaching bolt	
3	R047243	3	<b>O-ring</b> , bearing housing attaching bolt	
4	R047242	1	<b>O-ring</b> , bearing housing attaching	
5	RP061022	1	<b>Impeller Kit</b> (includes O-rings and impeller)	
6	R057032	1	<b>Housing</b> , raw water pump	
7	RA134071	1	<b>Bearing Housing Assembly</b>	
8	RA057032	1	<b>Raw Water Pump Assembly</b>	
9	R175056	1	<b>Bolt</b> , raw water pump cam	
10	R047254	1	<b>O-ring</b> , raw water pump cam	
11	R161018	1	<b>Cam</b> , raw water pump	
12	RS3554	1	<b>Plug</b> , brass 1/8 NPT	

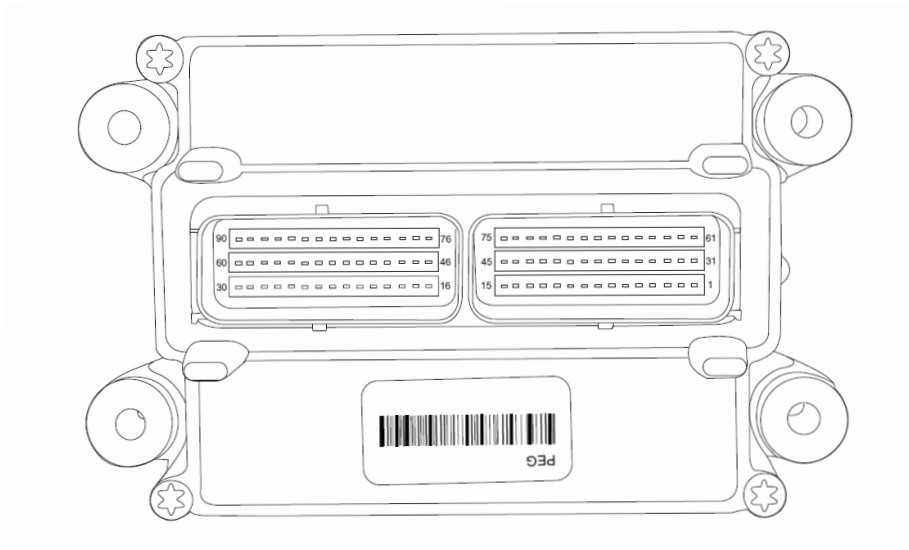
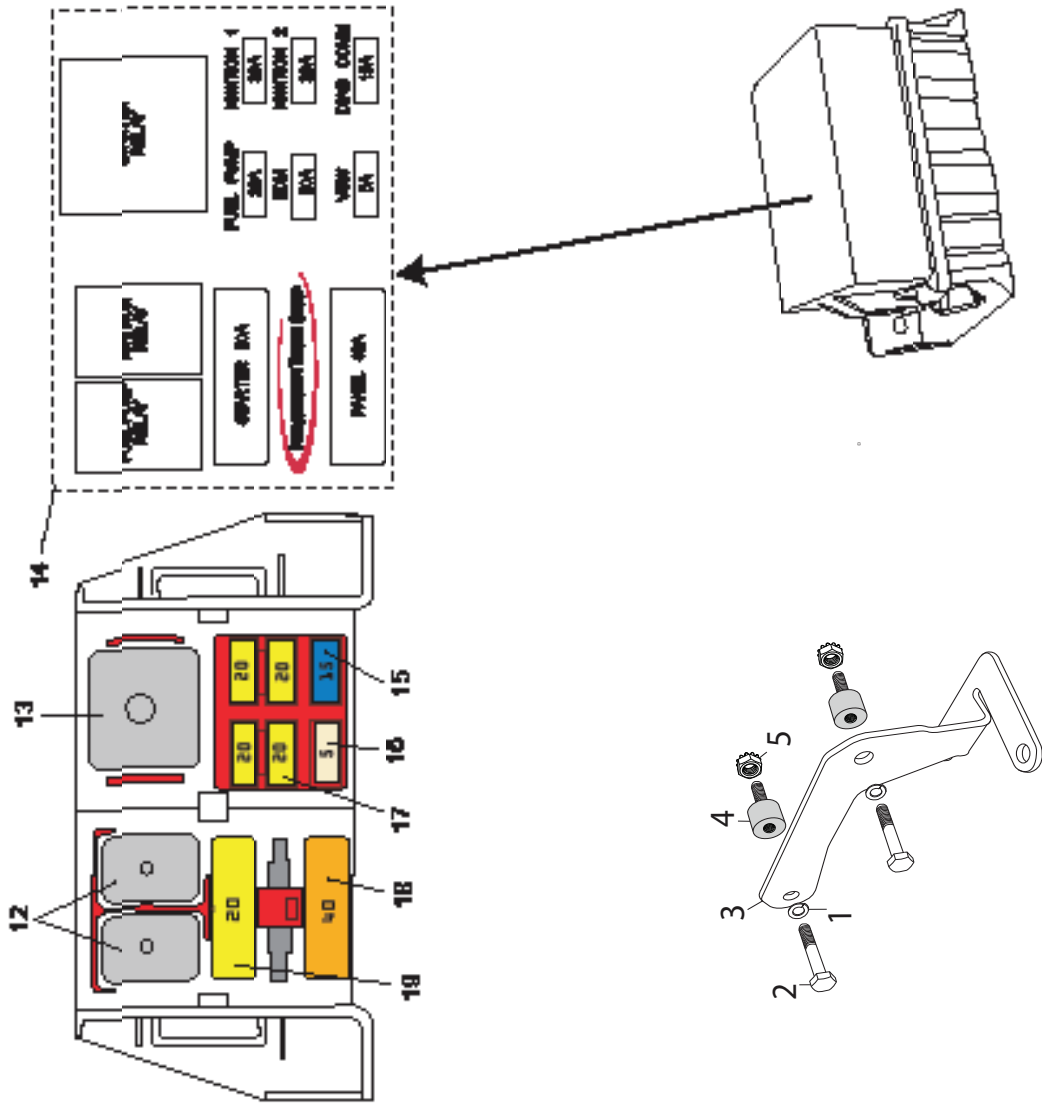
WIRING HARNESS ASSEMBLIES and SENDERS



## WIRING HARNESS ASSEMBLIES and SENDERS

ITEM	PART NO.	QTY.	DESCRIPTION	MODEL ID
1	R116028	1	<b>Module</b> , Engine control 120 pin	
2	RA121111	1	<b>Engine Wiring Harness Assembly</b>	
3	R127038D	10	<b>Cable Tie</b> ,	
4	R153020	1	<b>Fuse Link</b> , 125A 50"	
5	R129003A	1	<b>Boot</b> , Starter wire	

## ECM and RELAYS

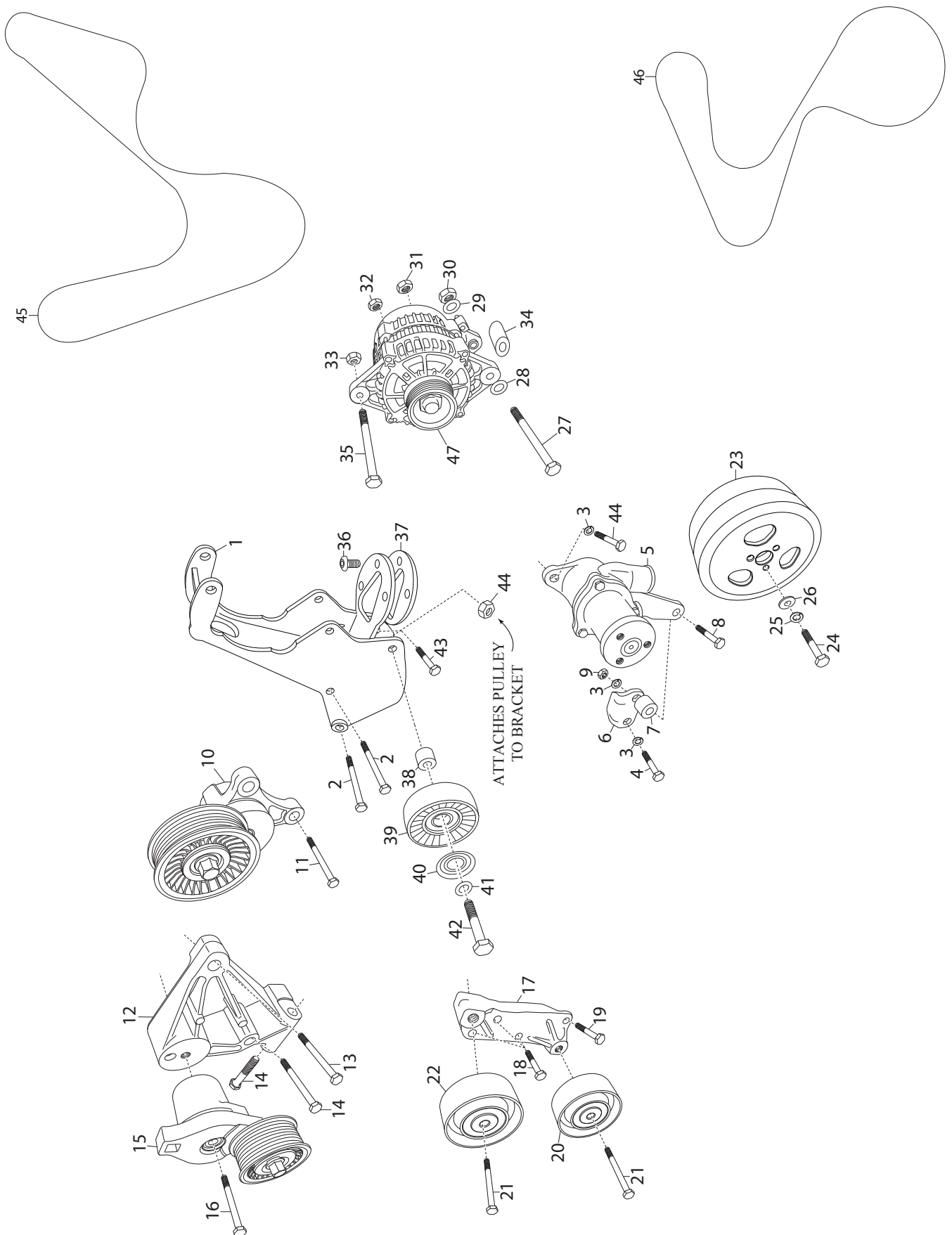




## ECM and RELAYS

ITEM	PART NO.	QTY.	DESCRIPTION	MODEL ID
1	RS0251	2	<b>Bolt</b> , fuse block isolator attaching	
2	RS2178	2	<b>Lockwasher</b> , fuse block isolator attaching	
3	R090391	1	<b>Bracket</b> , fuse block mounting	
4	95104060	2	<b>Nut</b> , keps fuse block attaching	
5	98222016	2	<b>Bolt</b> , fuse block mounting bracket attaching	
6	R094044	2	<b>Isolator</b> , fuse block mounting	
7	R116028	1	<b>Engine Control Module</b>	
8				
9				
10				
11				
12	R130015	2	<b>Relay</b> , Fuel Pump and Ignition	
13	R130016	1	<b>Relay</b> , Starter	
14	TBD	1	<b>Decal</b> , main fuse box	
15	R153017C	1	<b>Fuse</b> , 5 amp	
16	R153017A	1	<b>Fuse</b> , 15 amp	
17	R153017B	4	<b>Fuse</b> , 20 amp	
18	R153019F	1	<b>Fuse</b> , Panel, 40 Amp	
19	R153019C	1	<b>Fuse</b> , Starter, 20 Amp	

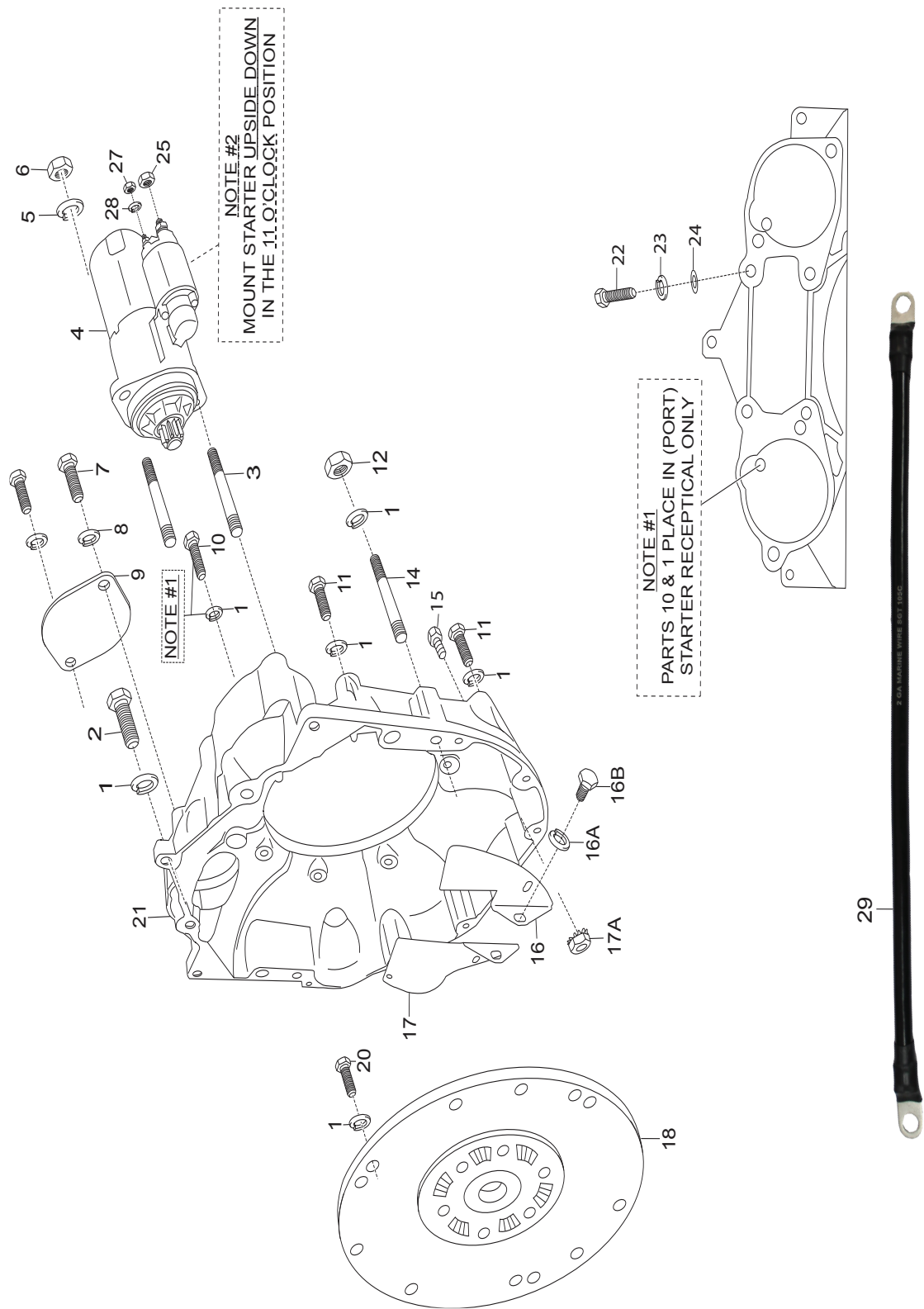
ACCESSORY DRIVE SYSTEM COMPONENTS



## ACCESSORY DRIVE SYSTEM COMPONENTS

ITEM	PART NO.	QTY.	DESCRIPTION	MODEL ID
1	R090387A	1	<b>Bracket</b> , Alternator 6.2L	
2	98447090	2	<b>Bolt</b> , M10 x 1.5 x 90 mm	
3	96940000	3	<b>Washer</b> , M10	
4	98443025	1	<b>Bolt</b> , M10 1.5 x 25	
5	RA057032	1	<b>Pump</b> , Raw Water	
6	R090389	1	<b>Bracket</b> , Offset Raw Water Pump	
7	R062096	1	<b>Spacer</b> ,	
8	98449055	1	<b>Bolt</b> , M10 1.5 x 55	
9	97440000	1	<b>Nut</b> , M10 x 1.5	
10	RA068004	1	<b>Tensioner</b> , Supercharger	
11	R009214	2	<b>Bolt</b> ,	
12	R090398	1	<b>Bracket</b> , S/C Tensioner	
13	98447045	1	<b>Bolt</b> , Tensioner Mounting	
14	98447080	1	<b>Bolt</b> , Tensioner Mounting	
15	RA068004	1	<b>Tensioner</b> , Belt	
16	98442030	2	<b>Bolt</b> , M10 x 1.5 x 100 mm	
17	R090399	1	<b>Bracket</b> , Idler Pulley	
18	R009212	3	<b>Bolt</b>	
19	R009213	1	<b>Bolt</b>	
20	R065062	1	<b>Pulley</b> , Idler - small	
21	98447060	2	<b>Bolt</b> , M10 x 1.5 x 60 mm	
22	R065061	1	<b>Pulley</b> , Idler - Large	
23	R065060B	1	<b>Pulley</b> , RWP- Red XS Black XR	
24	99335020	3	<b>Bolt</b> , Pulley to RWP	
25	93934000	3	<b>Washer</b> ,	
26	92934020	3	<b>Washer</b> ,	
27	98333075	1	<b>Bolt</b> , , Alternator Mounting	
28	92934020	1	<b>Washer</b> , Alternator Mounting	
29	93930000	1	<b>Washer</b>	
30	97334000	1	<b>Nut</b> ,	
31	97330060	1	<b>Nut</b> ,	
32	9722060	1	<b>Nut</b> ,	
33	97440300	2	<b>Nut</b> ,	
34	R062097	1	<b>Spacer</b>	
35	98447080	1	<b>Bolt</b> ,	
36	90384100	3	<b>Bolt</b> , FCC to Bracket	
37	R062091	1	<b>Spacer</b> , FCC insulator	
38	R062083	1	<b>Spacer</b> , Idler Pulley	
39	R065054	1	<b>Pulley</b> , Idler	
40	R096145	1	<b>Washer</b> , Idler Shield	
41	92940000	1	<b>Washer</b> , Flat	
42	98449055	1	<b>Bolt</b> ,	
43	98447025	1	<b>Bolt</b> ,	
44	99443030	1	<b>Bolt</b> ,	
45	R066036	1	<b>Belt</b> , Accesory Drive	
46	R066037	1	<b>Belt</b> , Supercharger Drive	
47	RA097011	1	<b>Alternator</b> , 120 amp	
47A	RA097009	1	<b>Alternator</b> , 100 amp	

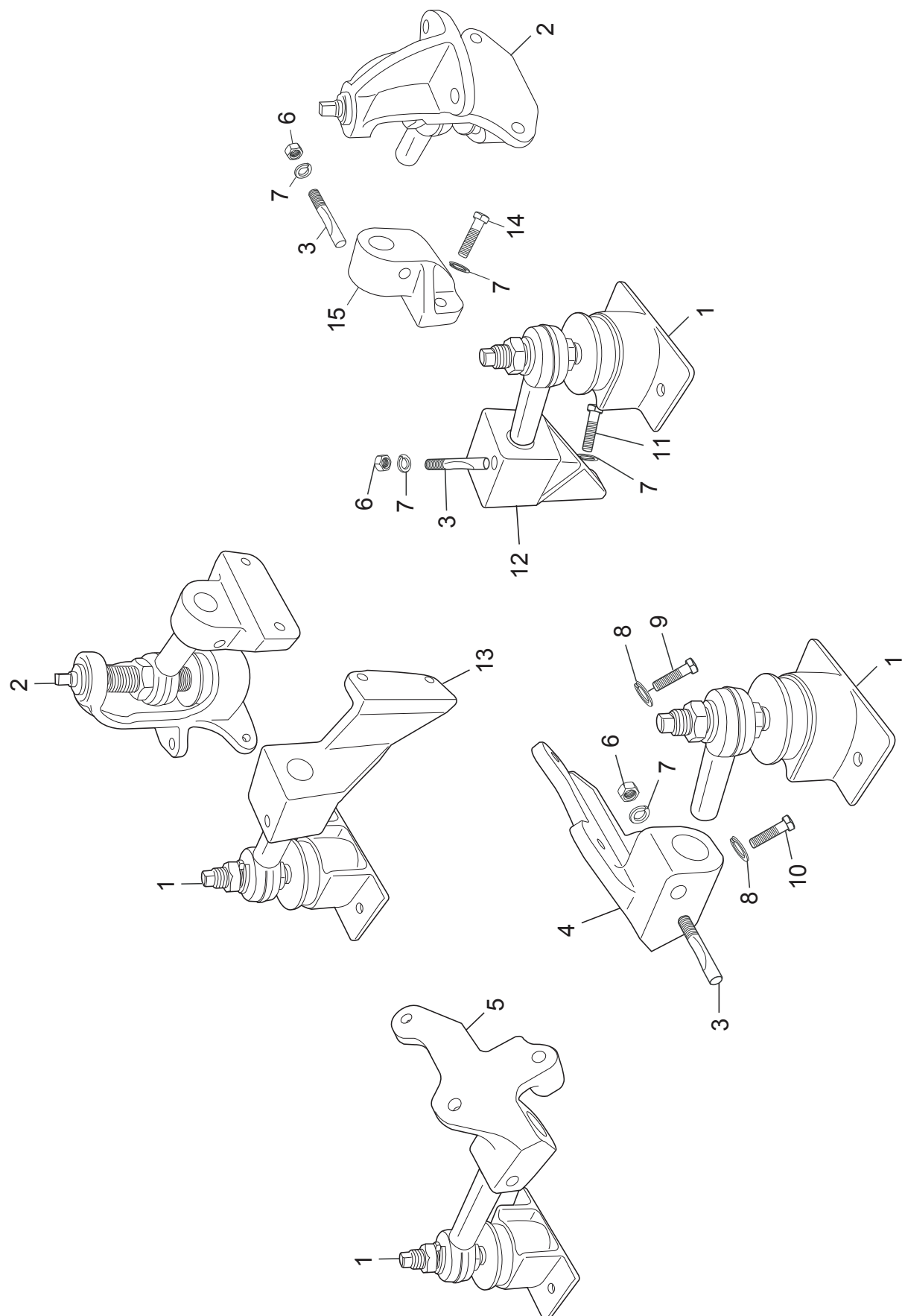
BELLHOUSING AND STARTER ASSEMBLY COMPONENTS



## BELLHOUSING AND STARTER ASSEMBLY COMPONENTS

ITEM	PART NO.	QTY.	DESCRIPTION	MODEL ID
1	93940000	16	<b>Lockwasher</b> , M10	
2	98443030	1	<b>Bolt</b> , attaching	
3	R031018	2	<b>Stud</b> , starter attaching	
4	RA122009	1	<b>Starter Motor Assembly</b>	
5	RS2181	2	<b>Lockwasher</b> , starter attaching	
6	RS1029	2	<b>Nut</b> , starter attaching	
7	RS0327	2	<b>Bolt</b> , attaching	
8	RS2181	2	<b>Lockwasher</b> , attaching	
9	R019010	1	<b>Cover</b> , dust	
10	99443030	1	<b>Bolt</b> , attaching	
11	98446075	4	<b>Bolt</b> , attaching	
12	97440000	4	<b>Nut</b> , attaching	
13				
14	R031034	2	<b>Stud</b> , bellhousing ground	
15	RS0256	3	<b>Bolt</b> , attaching	
16	R019012	1	<b>Plate</b> , flywheel cover (port)	
16A	93920000	2	<b>Lockwasher</b> , flywheel cover plate attaching	
16B	98223016	2	<b>Bolt</b> , flywheel cover plate attaching	
17	R019011A	1	<b>Plate</b> , flywheel cover (starboard)	
17A	RS1078	3	<b>Nut</b> , keps 1/4-20	
18	R140024	1	<b>Plate</b> , damper	
19				
20	98446030	6	<b>Bolt</b> , damper plate attaching	
21	R142015E	1	<b>Bellhousing</b> , flywheel	
22	RS0302	2	<b>Bolt</b> , attaching	
23	RS2180	1	<b>Lockwasher</b> , attaching	
24	92300000	2	<b>Flatwasher</b> , attaching	
25	97330060	1	<b>Lockwasher</b> , solenoid terminal	
27	RS7036	1	<b>Nut</b> , solenoid terminal	
28	93003000	1	<b>Washer</b> , Lock	
29	R200000	1	<b>Cable</b> , Ground	

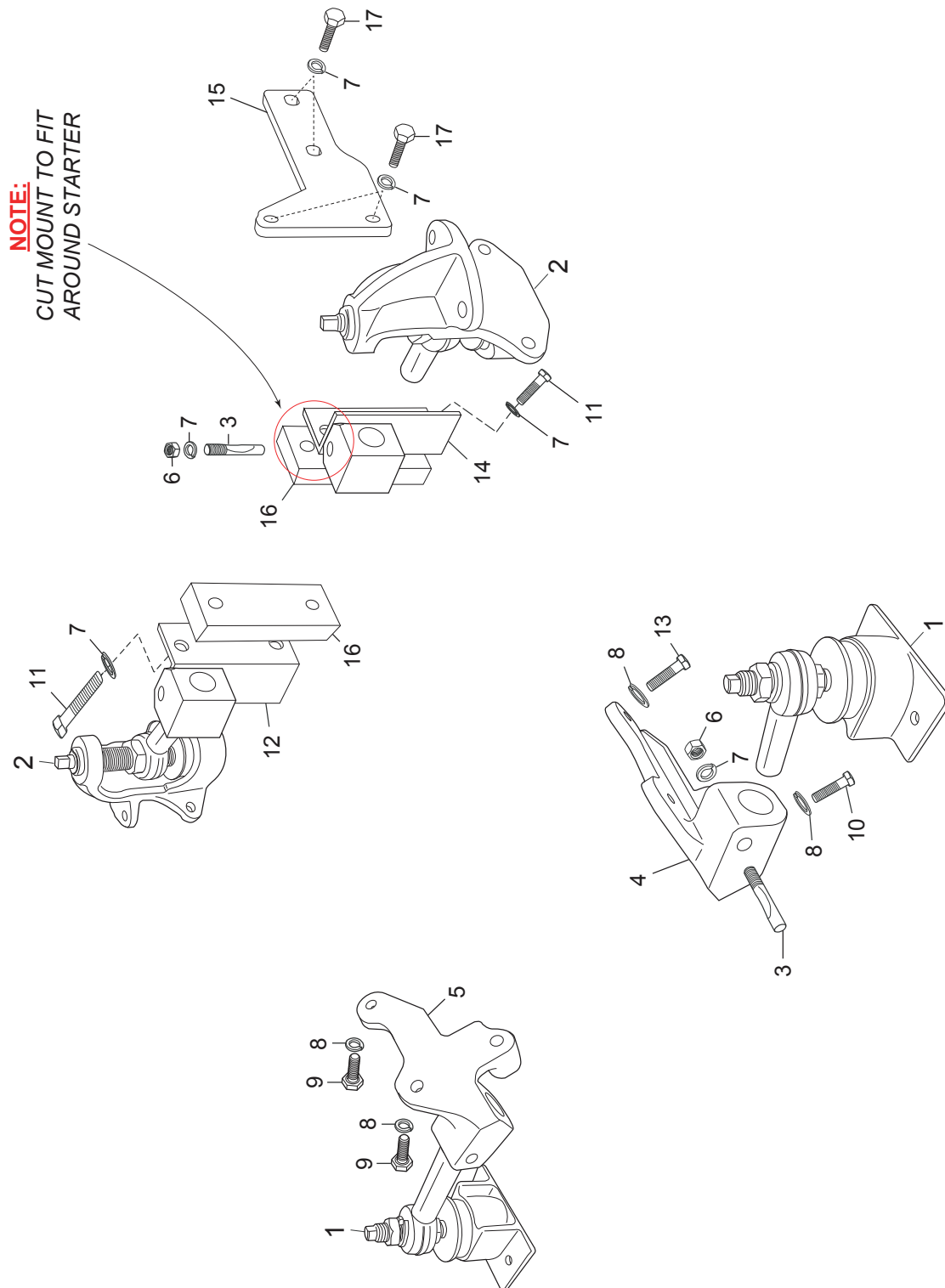
# ENGINE and TRANSMISSION MOUNTS



## ENGINE and TRANSMISSION MOUNTS

ITEM	PART NO.	QTY.	DESCRIPTION	MODEL ID
1	RA092016	4	<b>Mount Assembly</b> , front	<b>Watersport Series</b>
1A	RA092016-01A	4	<b>Mount Assembly</b> , front	
2	R090284	2	<b>Mount Assembly</b> , rear	<b>Watersport Series</b>
2A	RA09211-06A	2	<b>Mount Assembly</b> , rear	
3	R095020	6	<b>Bolt</b> , engine mounting lock	<b>Watersport Series</b>
3A	R095020A	6	<b>Bolt</b> , engine mounting lock	
4	R090294	4	<b>Bracket</b> , engine mount, port	<b>Watersport Series</b>
5	R090294	4	<b>Bracket</b> , engine mount, starboard	
6	RS1529	6	<b>Nut</b>	<b>Watersport Series</b>
6A	95414000	6	<b>Nut</b> ,	
7	RS2181	14	<b>Lockwasher</b>	<b>Watersport Series</b>
7A	93404000	6	<b>Washer</b>	
8	93940000	6	<b>Washer</b>	<b>Watersport Series</b>
9	98443030	4	<b>Bolt</b>	
10	98449055	2	<b>Bolt</b>	<b>Watersport Series</b>
11	R090354	4	<b>HHCS</b>	
12	R090354	1	<b>Mount</b> , Transmission	<b>Watersport Series</b>
13	R090355	1	<b>Mount</b> , Transmission	
14	R094007	4	<b>Bolt</b> ,	<b>Watersport Series</b>
15	R090205	2	<b>Mount</b> , V-drive	

ENGINE MOUNTS 15-620/621 MODELS

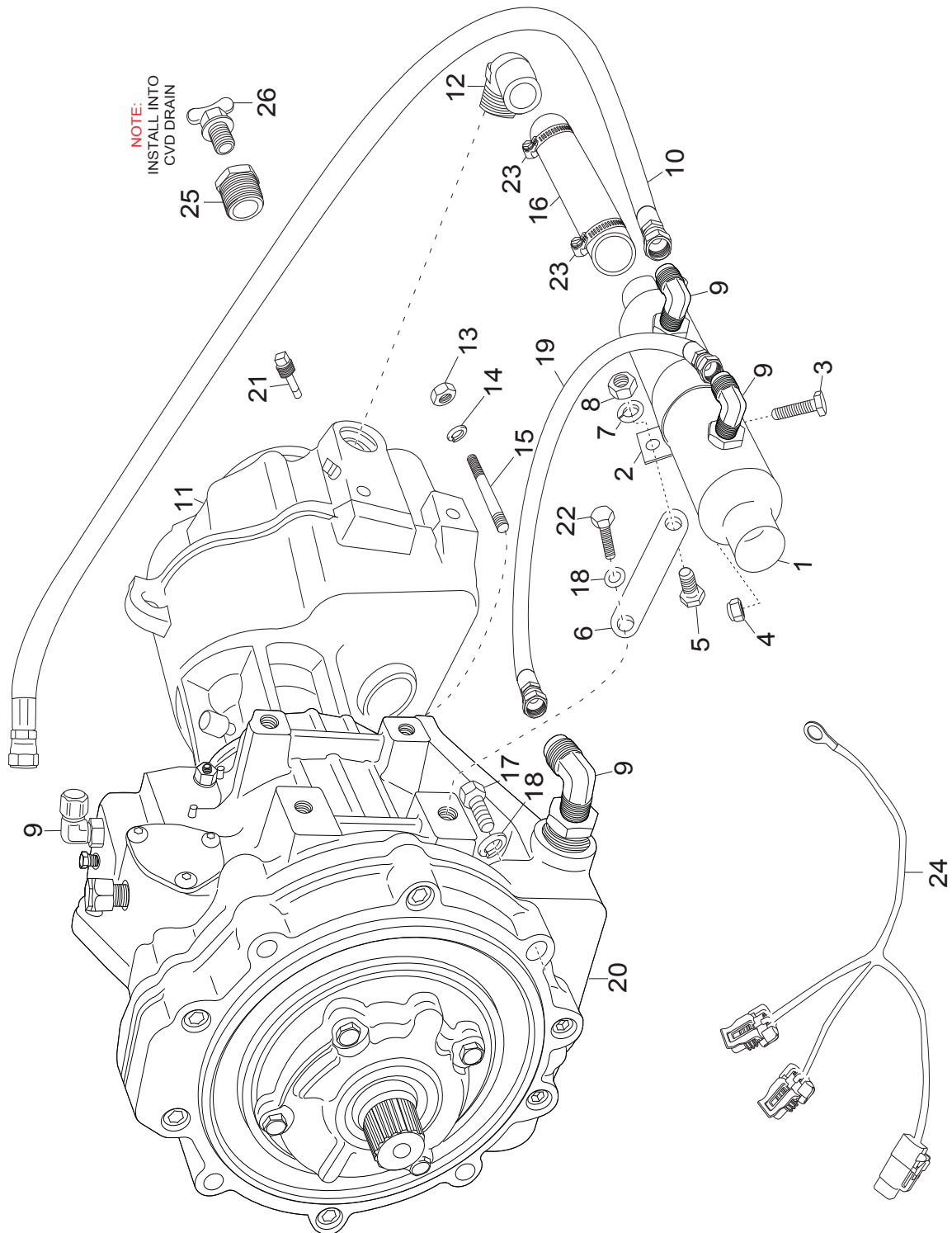




## ENGINE MOUNTS 15-620/621 MODELS

ITEM	PART NO.	QTY.	DESCRIPTION	MODEL ID
1	RA092016-08	2	<b>Mount Assembly</b>	Saltwater Series
1A	RA092016-08A	2	<b>Mount Assembly</b> Saltwater Series	
2	RA092003-10	2	<b>Mount Assembly</b>	
2A	RA092003-08B	2	<b>Mount Assembly</b>	
3	R095020	4	<b>Bolt</b> , Engine mounting lock	
3A	R095020A	4	<b>Bolt</b> , Engine mounting lock	
4	R090293	1	<b>Bracket</b> , Engine mount	
5	R090294	1	<b>Bracket</b> , Engine mount	
6	RS1529	4	<b>Nut</b> ,	
6A	95414000	4	<b>Nut</b> ,	
7	RS21811	2	<b>Lockwasher</b> ,	
7A	93404000	4	<b>Lockwasher</b>	
8	93940000	6	<b>Washer</b> , Lock	
9	98443030	3	<b>Bolt</b> ,	
10	98449055	2	<b>Bolt</b> ,	
11	RS0329	4	<b>Bolt</b> ,	
12	R090344	1	<b>Bracket</b> , Transmission	Saltwater Series
13	98447045	1	<b>Bolt</b> ,	
14	R090343	1	<b>Bracket</b> , Transmission	
15	R090454	1	<b>Plate</b> , Transmission brace	

TRANSMISSION AND RELATED COMPONENTS



## TRANSMISSION AND RELATED COMPONENTS

ITEM	PART NO.	QTY.	DESCRIPTION	MODEL ID
1	R147006	1	<b>Cooler</b> , Transmission oil 12" X 1- 1/4	Saltwater Series
2	R090010	1	<b>Bracket</b> , Transmission oil cooler	
3	RS0256	1	<b>Bolt</b> , Transmission oil cooler attaching	
4	RS2058	1	<b>Nut</b> , Transmission oil cooler attaching	
5	R090405	1	<b>Bracket</b> , Transmission Cooler	
6	R090013A	1	<b>Bracket</b> , Transmission oil cooler	
7	RS2180	1	<b>Lockwasher</b> , Transmission oil cooler bracket attaching	
8	RS1028	1	<b>Nut</b> , Transmission oil cooler bracket attaching	
9	R024010	4	<b>Fitting</b> , 90 degree	
10	RA045007R	1	<b>Hose Assembly</b> , Cooler to transmission	
11	RA156011B	1	<b>V-drive Assembly</b> - 1.48:1	
11A	RA156013	1	<b>V-drive Assembly</b> - 1.72	
11B	RA156012A	1	<b>V-drive Assembly</b> - 2.0:1	
12	R024268	2	<b>Elbow</b>	
13	RS7026	8	<b>Nut</b>	
14	RS2179	8	<b>Lockwasher</b>	
15	R031035	8	<b>Stud</b>	
16	20865	1	<b>Hose</b> , Wire reinforced	
17	RS0337	4	<b>Bolt</b> , Transmission attaching	
18	RS2181	5	<b>Lockwasher</b>	
19	RA045007C	1	<b>Hose Assembly</b>	
20	RA157028	1	<b>Transmission Assembly</b> , Manual shift	
20A	RA157028E	1	<b>Transmission Assembly</b> Electric shift	
21	R041091	2	<b>Dipstick</b> , V-drive	
22	RS0327	1	<b>Bolt</b>	
23	RS3858	2	<b>Clamp</b> , Hose # 20 (1-1/4)	
24	R121117	1	<b>Harness</b> , Electric shift adaptor	
25	R069078	1	<b>Plug</b> , Drain	
26	R024276	1	<b>Fitting</b> , Adaptor v-drive drain	
NI	RA045007R	1	<b>Anode</b> ,	